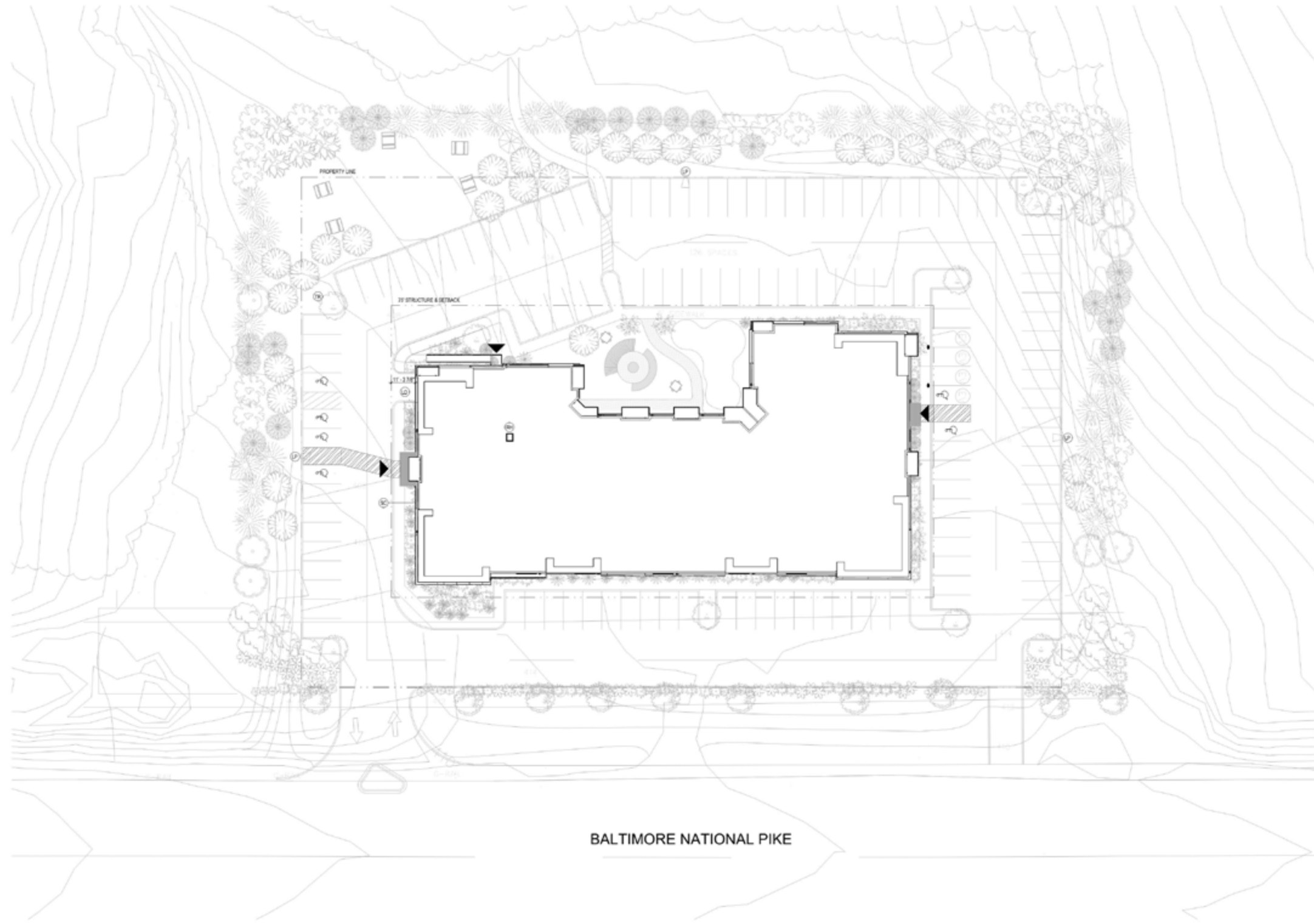




DHVANI SHAH

Architectural Designer
Technical Drawings









dshah.arch@gmail.com
+1 (979) 334 - 5449



BALTIMORE NATIONAL PIKE

ARCHITECTURAL SITE PLAN A1
 REF DRAWINGS: A1 / A200 SCALE: 1" = 20'-0"

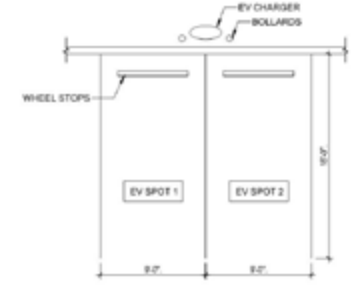
SITE PLAN LEGEND

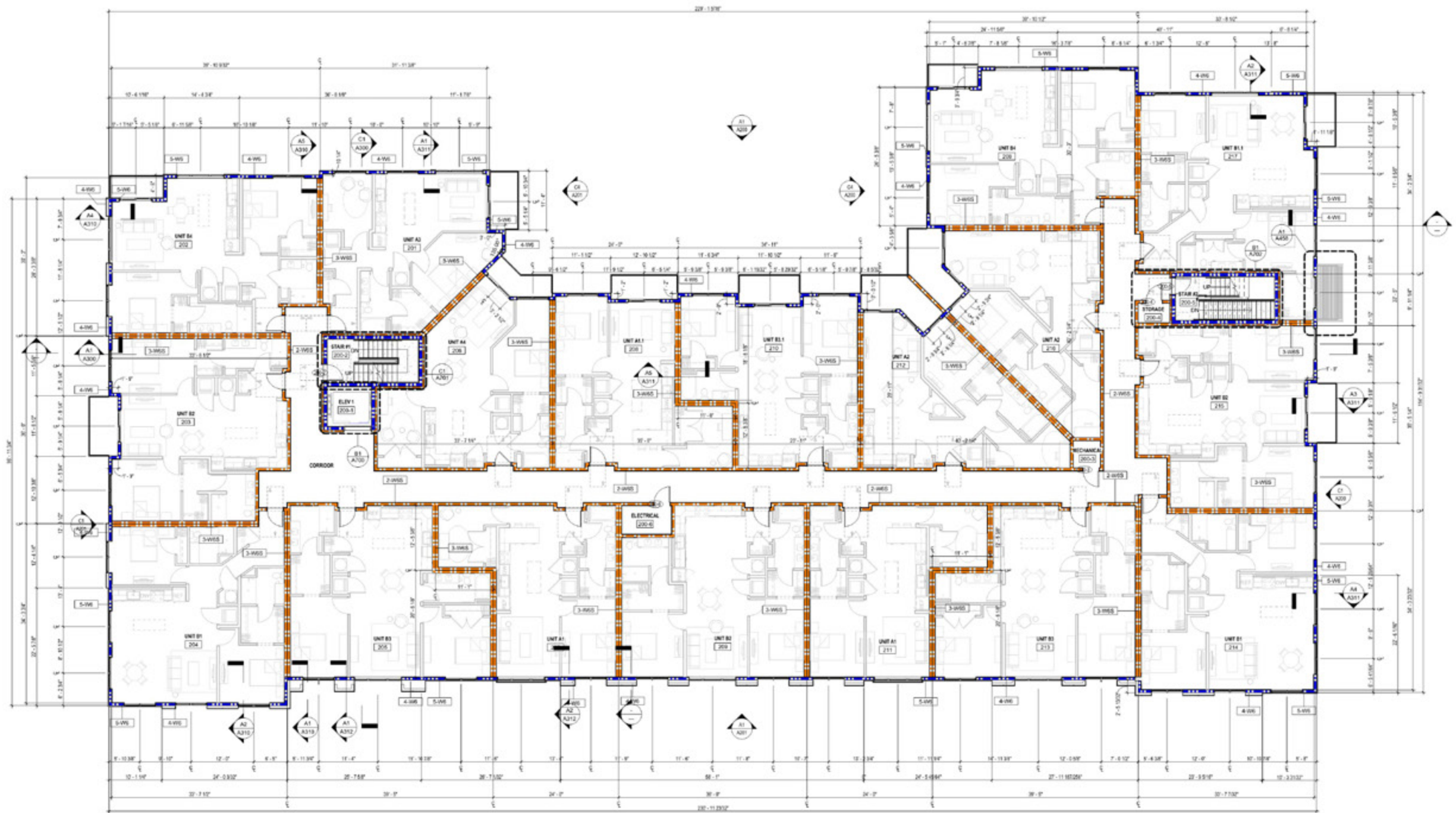
-  ACCESSIBLE ROUTE
-  EXIT
-  ELECTRIC VEHICLE CHARGING STATION TO CHARGE TWO VEHICLES
-  WC PARKING SPACES
-  PROPERTY / STACK LINE
-  SERVICE CONNECTION
-  TRANSFORMERS
-  LOADING DOCK
- LIGHT POLE
- ROOF HATCH

PARKING COUNT

PARKING	SPACES
TOTAL PARKING REQUIRED	110 SPACES
TOTAL PARKING PROVIDED	80 SPACES
REQUIRED ADA SPACES	5 SPACES
STANDARD	5 SPACES
VM ACCESSIBLE	1 SPACE
ELECTRIC VEHICLE CHARGING STATIONS	4 SPACES
ACTUAL	4 SPACES
FUTURE	-

EV STATION DIAGRAM





LEVEL 2
 REF DRAWING A1 / A20 SCALE: 1/8" = 1'-0" **A1**

CONSTRUCTION PLAN GENERAL NOTES

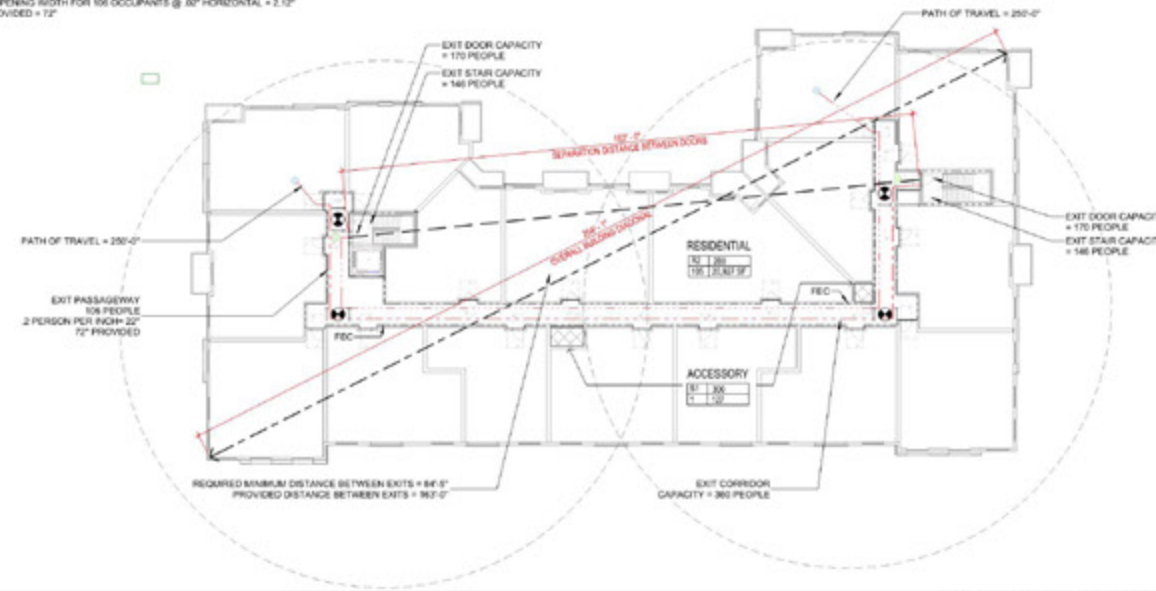
1. SEE SPECIFICATIONS FOR DETAILED INFORMATION.
2. SEE ADDENDUM FOR GENERAL CONDITIONS OF THE CONTRACT FOR CONSTRUCTION.
3. SEE SHEET A05 FOR SYMBOLS, ACCESSIBILITY MOUNTING STANDARDS, AND ABBREVIATIONS. SEE SHEET A06 FOR CODE SUMMARY INFORMATION.
4. SEE SHEET A07 FOR PARTITION TYPES AND SCHEDULES.
5. CONTRACTOR TO COORDINATE CONSTRUCTION WITH ALL TRADES PRIOR TO COMMENCEMENT OF WORK.
6. CONTRACTOR RESPONSIBLE FOR REPAIRING, PATCHING, AND REPLACING DAMAGE DUE TO CONSTRUCTION OR TO INSTALLATIONS BY TRADES. REPAIR, PATCH, AND FINISH OF EXISTING CONDITIONS DAMAGED BY NEW WORK TO MATCH ADJACENT WORK.
7. INTERIOR DIMENSIONS ARE TAKEN TO THE FACE OF EXISTING WALLS, NEW CONSTRUCTION, AND EQUIPMENT U.S.D.
8. EXTERIOR DIMENSIONS ARE TAKEN FROM FACE OF SHEATHING OR MASONRY U.S.D. SEE WALL SECTIONS AND DETAILS FOR MORE INFORMATION.
9. SET DOORS 4" FROM ADJACENT PARTITIONS U.S.D.
10. CONTRACTOR TO FIELD VERIFY DIMENSIONS AND CONNECTION POINTS PRIOR TO COMMENCEMENT OF NEW CONSTRUCTION. IN CASE OF CONFLICT, CONTRACTOR TO NOTIFY THE ARCHITECT PRIOR TO PROCEEDING WITH WORK.
11. ALL ITEMS TO BE SUPPLIED AND INSTALLED BY CONTRACTOR UNLESS SPECIFICALLY LISTED AS "I.C." OR "BY OTHERS".
12. COORDINATE SEQUENCE OF WORK TO PROTECT ADJACENT SPACES FROM CONSTRUCTION ZONE. PROVIDE BARRIER SEPARATIONS AS REQUIRED AND DIRECTED BY GENERAL CONTRACTOR AND OWNER.
13. PROVIDE AND INSTALL ADEQUATE SOLID-FIRE RETARDANT WOOD BLOCKING AT ALL EXISTING AND NEW PARTITIONS TO RECEIVE MILLWORK, SHELVING, WALL MOUNTED EQUIPMENT, PLUMBING ACCESSORIES, ETC. BLOCKING TO COMPLY WITH NFPA 704 AND AIA/IFM REQUIREMENTS.
14. MAINTAIN FIRE RATING OF CONSTRUCTION WHERE ANY ITEMS ARE BUILT INTO CONSTRUCTION. FIRE STOP AND SEAL PENETRATIONS IN FIRE RATED CONSTRUCTION IN ACCORDANCE TO APPLICABLE U.L. ASSEMBLY RATINGS.
15. CLEARLY MARK LOCATION AND EXTENT OF CUTTING AND PATCHING PRIOR TO COMMENCEMENT OF WORK.
16. CONTRACTOR TO CHOP, TRENCH, OR CORE SLAB AS REQUIRED. FILL AND PATCH SLAB TO ACCOMMODATE ALL UNDERGROUND UTILITIES SUCH AS SANITARY, STORM, DOMESTIC WATER LINES, ELECTRICAL CONDUIT, SPRINKLER MAINS, ETC. CONTRACTOR TO VERIFY IF SLAB IS STRUCTURAL. IF SO, DO NOT COMMENCE ANY CUTTING UNTIL APPROVAL IS OBTAINED FROM ARCHITECT.
17. PIPES, DUCTS, ETC. IN THAT WOULD OTHERWISE BE VISIBLE IN FINISHED SPACES TO BE CONCEALED WITH FURNISH OR CEILING U.S.D.
18. CONTRACTOR TO COORDINATE LOCATIONS OF PLUMBING CLEAN-OUT ACCESS PANELS NOTED ON PLUMBING DRAWINGS WITH NEW CONSTRUCTION.
19. REFER TO STRUCTURAL AND MEPP DRAWINGS AND SPECIFICATIONS FOR MORE INFORMATION.
20. WALL TYPES TO BE 1/2" UNLESS OTHERWISE NOTED.

CONSTRUCTION PLAN KEY NOTES

THIS TITLE
TYPICAL LEVEL 02 TO 04
 SHEET NUMBER
A102

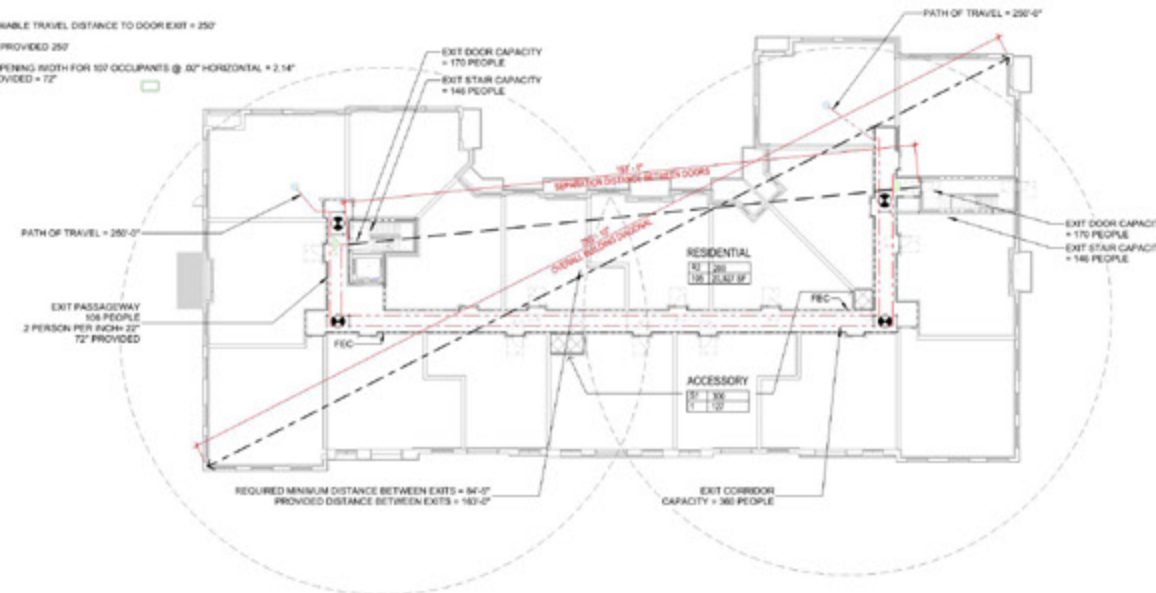
OCCUPANT LOADS				
FLOOR	AREA	OCC. FACTOR	TOTAL	
BASEMENT FLOOR				
ACTIVITY	3,302 SF	300 GROSS	9	
ASSEMBLY UNCONCENTRATED	2,262 SF (INC. 12 INCL)	15 INCL	151	
BUSINESS	2,425 SF	150 GROSS	17	
EXERCISE	1,480 SF	30 GROSS	30	
TOTAL			207	
LEVEL 1				
ACCESSORY	127 SF	300 GROSS	1	
RESIDENTIAL	21,111 SF	200 GROSS	106	
TOTAL			107	
LEVEL 2				
ACCESSORY	127 SF	300 GROSS	1	
RESIDENTIAL	21,111 SF	200 GROSS	106	
TOTAL			107	
LEVEL 3				
ACCESSORY	127 SF	300 GROSS	1	
RESIDENTIAL	21,111 SF	200 GROSS	106	
TOTAL			107	
LEVEL 4				
ACCESSORY	127 SF	300 GROSS	1	
RESIDENTIAL	21,111 SF	200 GROSS	106	
TOTAL			107	
LEVEL 5				
ACCESSORY	127 SF	300 GROSS	1	
RESIDENTIAL	21,827 SF	200 GROSS	108	
TOTAL			109	

MAX ALLOWABLE TRAVEL DISTANCE TO DOOR/EXIT = 250'
 DISTANCE PROVIDED 250'
 EGRESS OPENING WIDTH FOR 106 OCCUPANTS @ 32" HORIZONTAL = 2.12"
 WIDTH PROVIDED = 72"



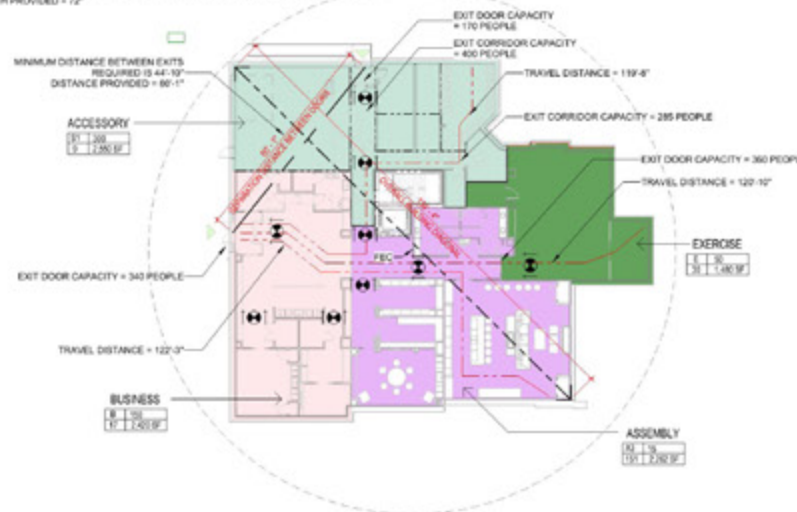
LEVEL 5 EGRESS PLAN
 REF DRAWING A1 / A20 SCALE: 1" = 20'-0" C1

MAX ALLOWABLE TRAVEL DISTANCE TO DOOR/EXIT = 250'
 DISTANCE PROVIDED 250'
 EGRESS OPENING WIDTH FOR 107 OCCUPANTS @ 32" HORIZONTAL = 2.14"
 WIDTH PROVIDED = 72"



LEVEL 1-4 TYPICAL PLAN
 REF DRAWING A1 / A20 SCALE: 1" = 20'-0" B1

MAX ALLOWABLE TRAVEL DISTANCE TO DOOR/EXIT = 250'
 DISTANCE PROVIDED 250'
 EGRESS OPENING WIDTH FOR 204 OCCUPANTS @ 32" HORIZONTAL = 4.08"
 WIDTH PROVIDED = 72"

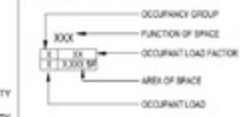


AMENITY LEVEL EGRESS PLAN
 REF DRAWING A1 / A20 SCALE: 1" = 20'-0" A1

EGRESS PLAN GENERAL NOTES

- SEE SHEET T001 FOR TYPICAL NOTES, SYMBOLS, AND ABBREVIATIONS
- SEE SHEET T002 FOR ARCHITECTURAL CODE SUMMARY SHEET

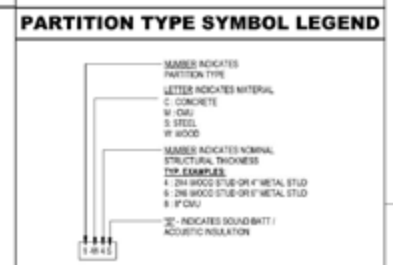
EGRESS PLAN LEGEND



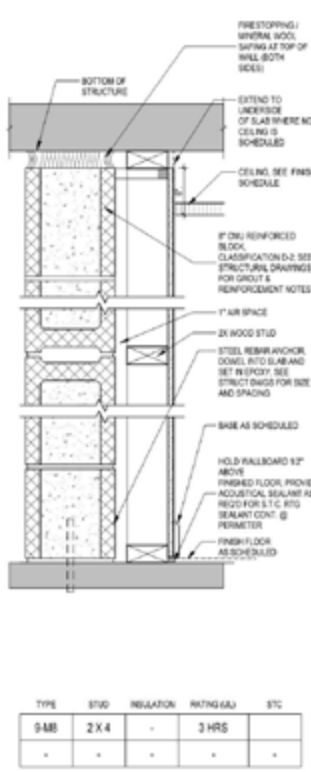
EXIT X - NAME OF THE LEVEL
 EGRESS REQUIRED - XXX OCCUPANTS
 EGRESS PROVIDED - XXX OCCUPANTS



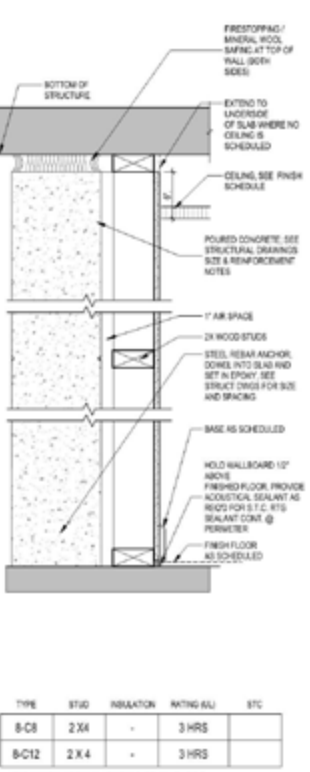
- GENERAL NOTES**
- PARTITIONS AND FINISHING ARE DIMENSIONED TO THE FACE OF FINISHED WALL, UNLESS OTHERWISE NOTED.
 - PARTITION TYPE INDICATIONS ARE INDEPENDENT OF APPLIED FINISHES. SEE FINISH SCHEDULE AND/OR SPECIFICATIONS FOR MORE INFORMATION REGARDING APPLIED FINISHES.
 - ALL SLAB TO SLAB PARTITIONS SHALL BE CALKED AT TOP AND BOTTOM WITH CONCEALED SEALANT TYPE PNC, TYPICAL, UNLESS OTHERWISE REQUIRED BY PRESTOPPING REQUIREMENTS.
 - ALL SEALANTS EXPOSED TO VIEW SHALL BE SEALANT TYPE ALS. ALL SEALANTS CONCEALED SHALL BE SEALANT TYPE PNC. WHERE PNC IS REQUIRED FOR SOUND BARRIERS AND WILL BE IN AN EXPOSED LOCATION, TOP WITH HEAD OF P.A.S. WHERE PARTITION TYPES ARE INTERRUPTED BY DOOR OPENINGS, GLASS PARTITIONS, ETC., CONSTRUCTION ABOVE INTERRUPTION AND FINISH APPLICABLE BELOW IS TO BE THE SAME AS DESIGNATION FOR THE PARTITION IN WHICH THE INTERRUPTION OCCURS.
 - THE MINIMUM REQUIREMENTS FOR CONSTRUCTION OF EACH PARTITION TYPE ARE INDICATED AS SHOWN. ADDITIONAL AND/OR MORE RESTRICTIVE REQUIREMENTS MAY BE INDICATED BY THE SPECIFICATIONS AND STRUCTURAL DRAWINGS. SUCH REQUIREMENTS INCLUDE BUT ARE NOT LIMITED TO:
 - 1/2" G.C. MESH STUD SPACING UNLESS OTHERWISE NOTED
 - STUD GAUGE
 - INDICATED STUD DEPTH
 - 3/8" TYPE 'X' GYPSUM BOARD THROUGHOUT
 - INSTALL ONE LAYER OF 5/8" MOISTURE AND MOLD RESISTANT GYPSUM BOARD (WHERE ONE OCCURS) ON BASIC PARTITIONS AT THE FOLLOWING LOCATIONS:
 - AT HEAD LOCATIONS
 - 8" WITH 1 FT HORIZ AND 4 FT VERTICALLY OF JAWLINE SIZES
 - AT OTHER LOCATIONS INDICATED ON ARCHITECTURAL PLANS
 - INSTALL ONE LAYER OF GYPSUM BOARD OR GYPSUM BOARD OVER GYPSUM BOARD ON BASIC PARTITIONS WHERE THERE IS NO FINISHING AND OTHER FACE OF GYPSUM BOARD AT FIRE RATED PARTITIONS AT THE FOLLOWING LOCATIONS:
 - AT HEAD LOCATIONS
 - 8" WITH 1 FT HORIZ AND 4 FT VERTICALLY OF JAWLINE SIZES
 - AT OTHER LOCATIONS INDICATED ON ARCHITECTURAL PLANS
 - SUBSTITUTE OTHER GIB MATERIALS AS REQUIRED BY ROOM FINISH SCHEDULE. SUBSTITUTE CONVENTIONAL SHAKER BOARD AS REQUIRED BY ROOM FINISH SCHEDULE.
 - COORDINATE ALL LIGHT GRADE STEEL STUDS, BRACING, AND ANCHORING SYSTEMS WITH STRUCTURAL DRAWINGS AND SPECS.
 - COORDINATE PRESTOP TRUCKS AND FIRE RESISTIVE JOINT SYSTEMS WITH UL MARKING AND SPECS FOR ALL RATED PARTITIONS.
 - PROVIDE ADDITIONAL JOINT SEALANT FOR ALL STC RATED PARTITIONS. COORDINATE CONSTRUCTION WITH SPECIFICATIONS.
 - NO HORIZONTAL GYP BOARD JOINTS SHALL BE MADE BEYOND SCHEDULED BASES. HOLD WALLBOARD 12" ABOVE FINISHED FLOOR. PROVIDE ACOUSTICAL SEALANT AS REQD FOR S.T.C. RTS.
 - WHERE 2 HOUR RATED CONCRETE MASONRY UNIT WALLS ARE REQUIRED, PROVIDE PRESTOPPING AS REQUIRED AT ADJACENT MATERIALS. SEE SPECIFICATIONS FOR ADDITIONAL REQUIREMENTS.
 - WHEN STAIRS ARE PRESSURIZED, AIR TIGHT CONSTRUCTION SHALL BE PROVIDED.
 - SEE RC SECTION 20 FOR CALCULATED FIRE RESISTANCE OF CAST IN PLACE CONCRETE WALLS.
 - PER RC SECTION 1007 PARTITIONS SEPARATING DWELLING UNITS FROM EACH OTHER OR FROM PUBLIC OR SERVICE AREAS SHALL HAVE A MIN 5/8" STC. FINISHES FOR FINISH, ELECTRICAL, RECESSED CABINETS, SINKS, SINKS, SINKS, FINISH OR EXHAUST DUCTS SHALL BE SEALED, LINED, INSULATED OR OTHERWISE TREATED TO MAINTAIN MIN 5/8" STC. FLOOR / CEILING ASSEMBLIES SHALL HAVE A MIN 5/8" STC RATING. EXHAUST DUCTS SHALL BE TIGHT FITTING TO THE FRAME AND BUL.
 - PARTITION TYPES BELOW POC/MAN LEVEL ARE TO USE FIRE RETARDANT TREATED WOOD STUDS OR METAL STUDS & TYPE 'X' GYPSUM BOARD.



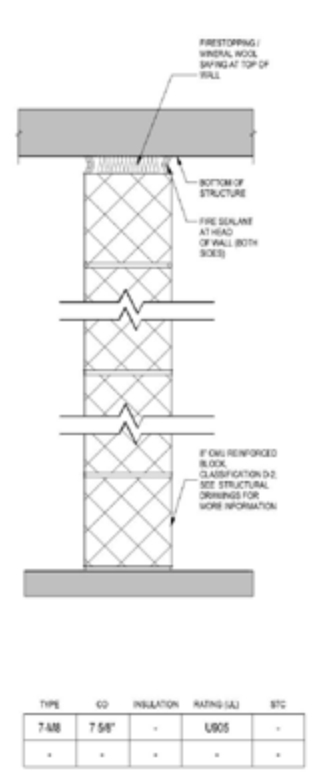
FURRED OUT MASONRY PARTITION



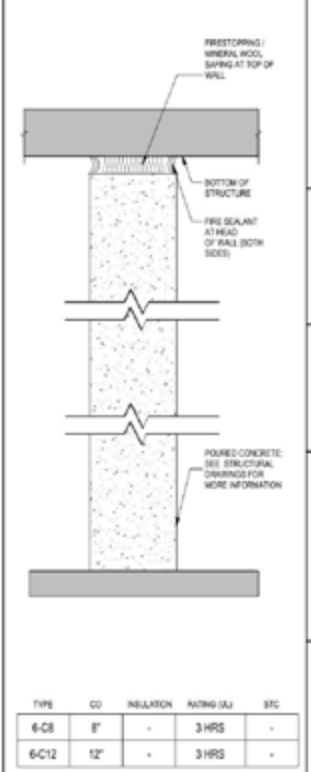
FURRED OUT MASONRY PARTITION



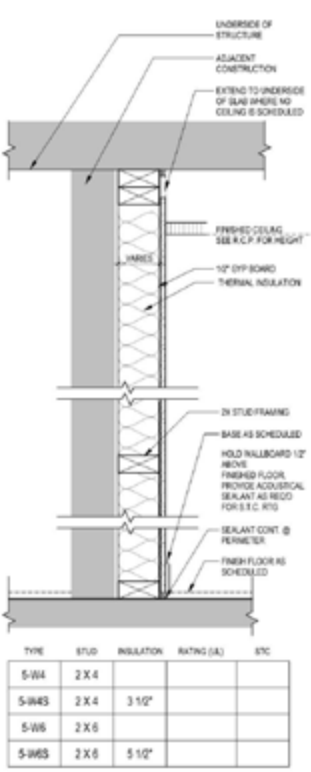
MASONRY PARTITION



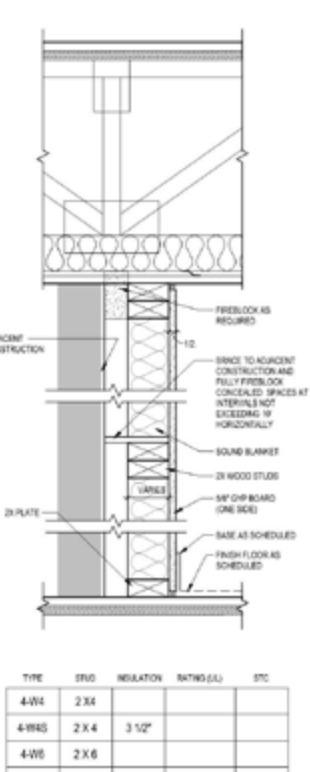
MASONRY PARTITION



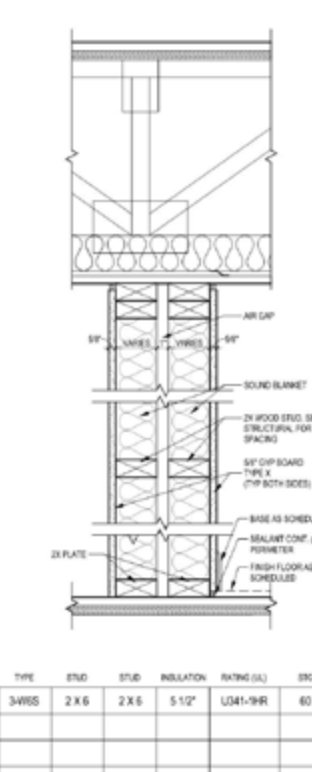
FURRED OUT WALL



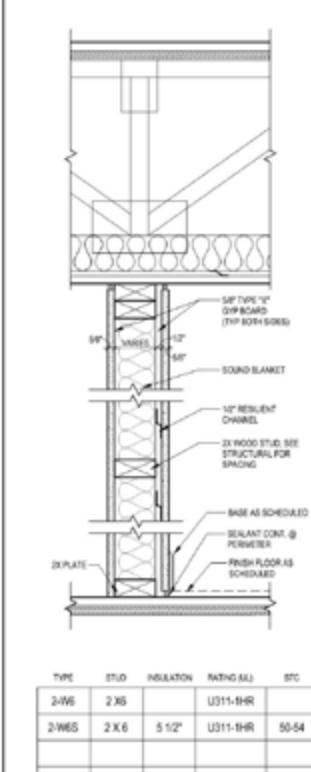
NON RATED - CHASE WALL



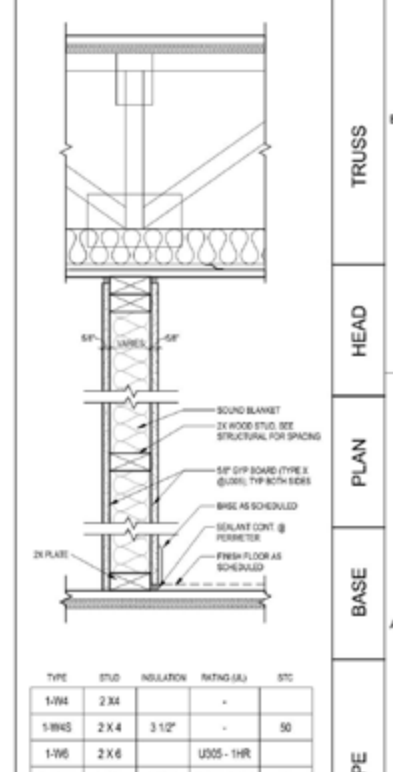
UNIT DEMISING WALL



CORRIDOR DEMISING WALL



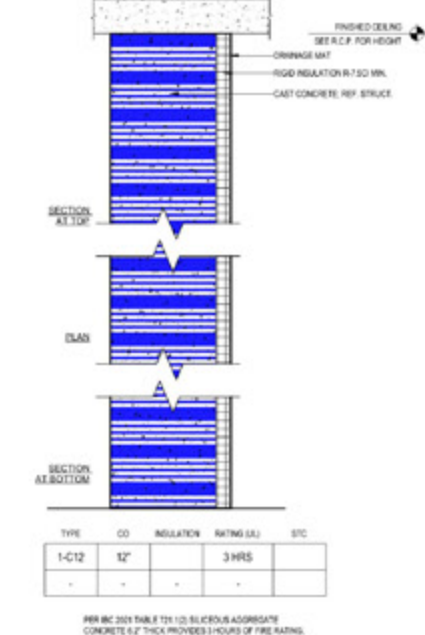
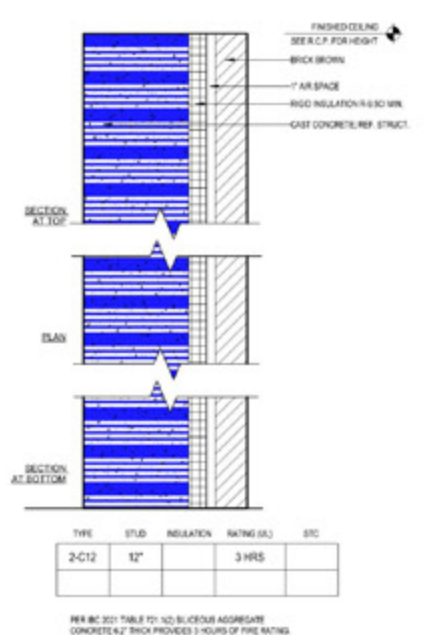
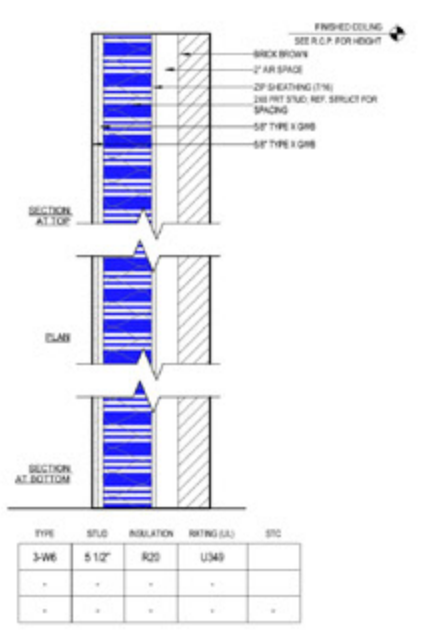
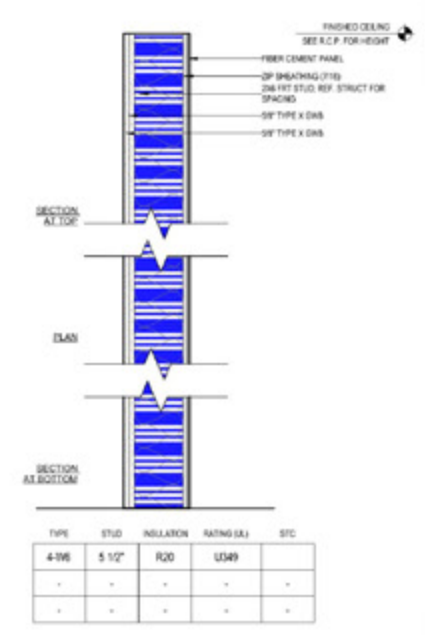
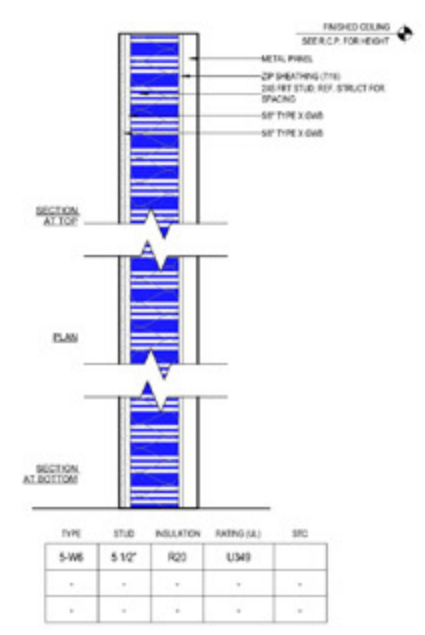
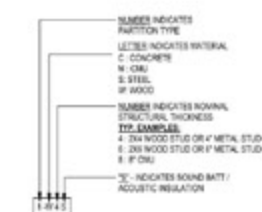
BASIC INTERIOR WALL



GENERAL NOTES

1. PARTITIONS AND FURRING ARE DIMENSIONED TO THE FACE OF FINISHED WALL, UNLESS NOTED OTHERWISE.
2. PARTITION TYPE INDICATORS ARE INDEPENDENT OF APPLIED FINISHES. SEE FINISH SCHEDULE AND/OR SPECIFICATIONS FOR MORE INFORMATION REGARDING APPLIED FINISHES.
3. IF THERE ARE PARTITION TYPES INTERRUPTED BY DOOR OPENINGS, GLAZED PARTITIONS, ETC., CONSTRUCTION ABOVE INTERRUPTION AND FINISH APPLICABLE BELOW IS TO BE THE SAME AS DESIGNATION FOR THE PARTITION IN WHICH THE INTERRUPTION OCCURS.
4. THE MINIMUM REQUIREMENTS FOR CONSTRUCTION OF EACH PARTITION TYPE ARE INDICATED AS SHOWN. ADDITIONAL AND/OR MORE RESTRICTIVE REQUIREMENTS MAY BE INDICATED BY THE SPECIFICATIONS AND STRUCTURAL DRAWINGS. SUCH REQUIREMENTS INCLUDE BUT ARE NOT LIMITED TO: USE OF 1/2" GYPSUM BOARD THROUGHOUT, 1/2" x 2" WOOD STUD SPACING UNLESS OTHERWISE NOTED, METAL STUD GAUGE, INDICATED STUD DEPTH.
5. INSTALL ONE LAYER OF 5/8" MOISTURE AND MOLD RESISTANT GYPSUM BOARD (WHERE ONE OCCURS) ON BASIC PARTITIONS AT THE FOLLOWING LOCATIONS:
 - A. AT ALL STUD LOCATIONS
 - B. WITHIN 2 FEET HORIZONTALLY AND 4 FEET VERTICALLY OF JAWTOL BRK.
 - C. AT OTHER LOCATIONS INDICATED ON ARCHITECTURAL PLANS.
6. INSTALL ONE LAYER OF GYPSUM BOARD OR GYPSUM BOARD WITH FIBER GLASS INSULATION ON BASIC PARTITIONS WHERE THERE IS NO FIRE RATING AND OVER FACE OF GYPSUM BOARD AT FIRE RATED PARTITIONS AT THE FOLLOWING LOCATIONS:
 - A. AT ALL STUD LOCATIONS
 - B. WHERE CERAMIC TILE FINISHES ARE INDICATED ON FINISH PLANS AND/OR INTERIOR ELEVATIONS.
 - C. AT OTHER LOCATIONS AS INDICATED ON ARCHITECTURAL PLANS.
7. COORDINATE ALL LIGHT GAUGE STEEL, STUDS, BRACING, AND ANCHORING SYSTEMS WITH STRUCTURAL DRAWINGS AND SPECS.
8. COORDINATE FIRESTOP TRACIS AND FIRE RESISTIVE JOINT SYSTEMS WITH U/L RATINGS AND SPECS FOR ALL RATED PARTITIONS.
9. PROVIDE ACoustICAL JOINT SEALANT FOR ALL STC RATED PARTITIONS. COORDINATE CONSTRUCTION WITH SPECS.
10. PROVIDE SLIP TYPE HEAD JOINT, PERMETOR RELIEF AT EVERY HEAD OF WALL CONNECTION UNLESS NOTED OTHERWISE.

PARTITION TYPE SYMBOL LEGEND



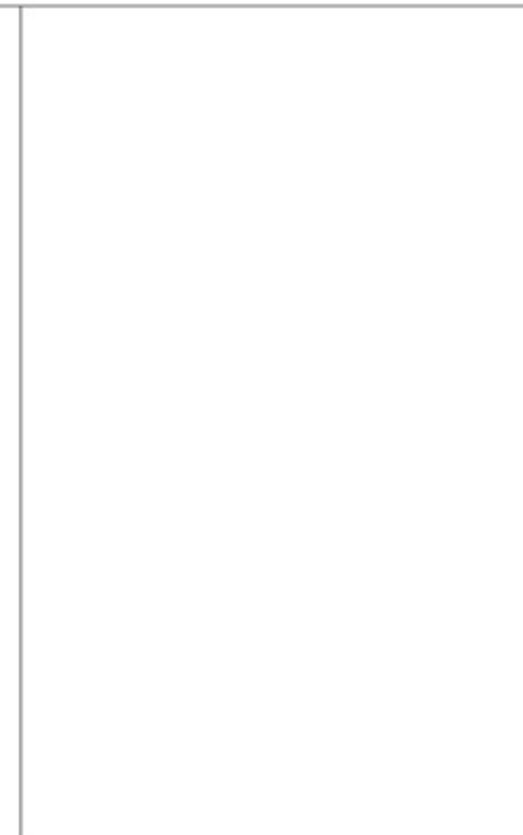
EXTERIOR PARTITION SCHEDULE



HA-5 2 HR U.L. Design No. L577
 WOOD TRUSS FLOOR/CEILING STC: NA



HA-4 1 HR U.L. Design No. L576
 2X10 FLOOR/CEILING STC: NA



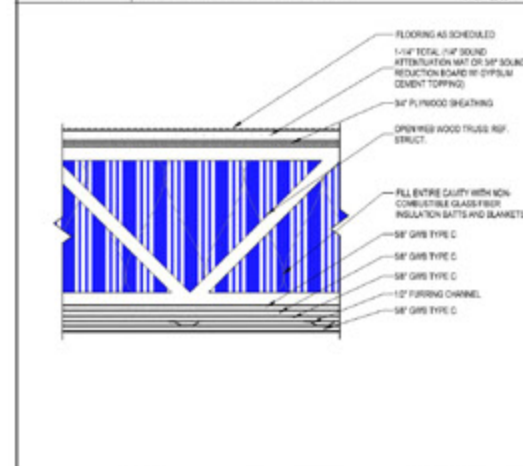
HA-3 1 HR U.L. Design No. L571
 WOOD TRUSS FLOOR/CEILING STC: 40-44



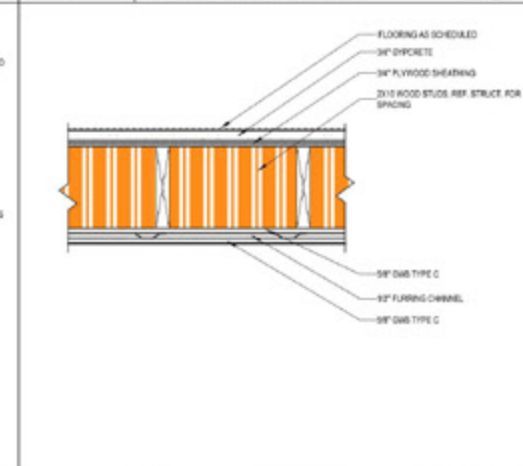
HA-2 3 HR U.L. Design No. NA
 CONCRETE POUR-IN STC: NA



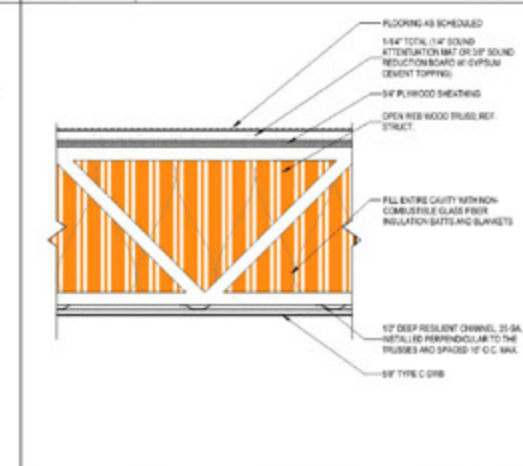
HA-6 1 HR U.L. Design No. NA
 2X10 WOOD JOIST STC: NA



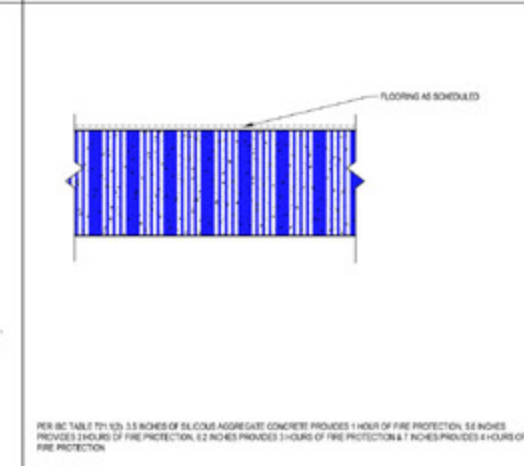
HA-5 2 HR U.L. Design No. L576
 WOOD TRUSS FLOOR/CEILING STC: NA



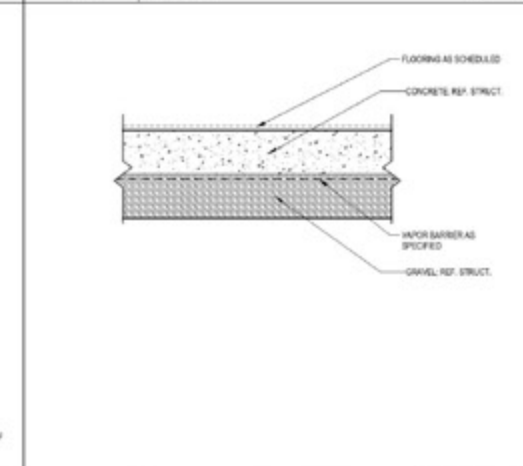
HA-4 1 HR U.L. Design No. L576
 2X10 FLOOR/CEILING STC: NA



HA-3 1 HR U.L. Design No. L571
 WOOD TRUSS FLOOR/CEILING STC: 40-44



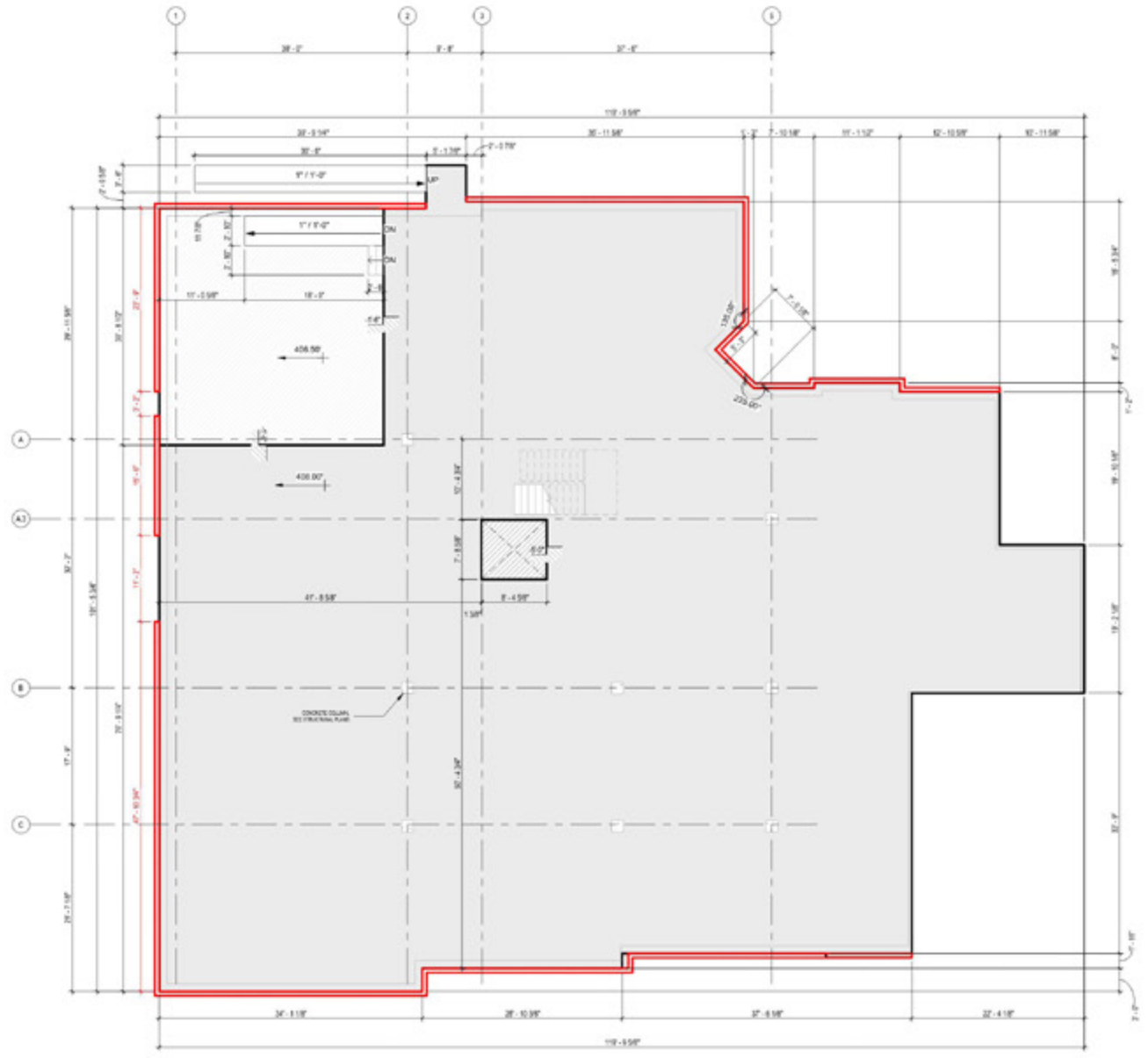
HA-2 3 HR U.L. Design No. NA
 CONCRETE POUR-IN STC: NA



HA-1 1 HR U.L. Design No. NA
 SLAB ON GRADE STC: NA

D
 C
 B
 A

ROOF, FLOOR, AND CEILING TYPES



BASEMENT SLAB EDGE PLAN

 REF DRAWING A11-A200 SCALE: 1/8" = 1'-0"

CONSTRUCTION PLAN GENERAL NOTES

1. SEE SPECIFICATIONS FOR DETAILED INFORMATION.
2. SEE A01-2017 FOR GENERAL CONDITIONS OF THE CONTRACT FOR CONSTRUCTION.
3. SEE SHEET A001 FOR TYPICAL NOTES, SYMBOLS, ACCESSIBILITY MOUNTING STANDARDS, AND ABBREVIATIONS. SEE SHEET 0002 FOR CODE SUMMARY INFORMATION.
4. SEE SHEET 0010 FOR PARTITION TYPES AND SCHEDULES.
5. CONTRACTOR TO COORDINATE CONSTRUCTION WITH ALL TRADES PRIOR TO COMMENCEMENT OF WORK.
6. CONTRACTOR RESPONSIBLE FOR REPAIRING, PATCHING, AND REPLACING DAMAGE DUE TO CONSTRUCTION OR TO INSTALLATIONS BY TRADES. REPAIR, PATCH, AND FINISH OF EXISTING CONDITIONS DAMAGED BY NEW WORK TO MATCH ADJACENT WORK.
7. INTERIOR DIMENSIONS ARE TAKEN TO THE FACE OF EXISTING WALLS, NEW CONSTRUCTION, AND EQUIPMENT U.N.D.
8. EXTERIOR DIMENSIONS ARE TAKEN FROM FACE OF SHEATHING OR MASONRY U.N.D. SEE WALLS SECTIONS AND DETAILS FOR MORE INFORMATION.
9. SET DOORS 6" FROM ADJACENT PARTITIONS U.N.D.
10. CONTRACTOR TO FIELD VERIFY DIMENSIONS AND CONNECTION POINTS PRIOR TO COMMENCEMENT OF NEW CONSTRUCTION. IN CASE OF CONFLICT, CONTRACTOR TO NOTIFY THE ARCHITECT PRIOR TO PROCEEDING WITH WORK.
11. ALL ITEMS TO BE SUPPLIED AND INSTALLED BY CONTRACTOR UNLESS SPECIFICALLY LISTED AS "I.C." OR "BY OTHERS".
12. COORDINATE SEQUENCE OF WORK TO PROTECT ADJACENT SPACES FROM CONSTRUCTION ZONE. PROVIDE BARRIER SEPARATIONS AS REQUIRED AND DIRECTED BY GENERAL CONTRACTOR AND OWNER.
13. PROVIDE AND INSTALL ADEQUATE SOLID FIRE RETARDANT HOOD BLOCKING AT ALL EXISTING AND NEW PARTITIONS TO RECEIVE MECHANICAL, SHELVING, WALL MOUNTED EQUIPMENT, PLUMBING ACCESSORIES, ETC. BLOCKING TO COMPLY WITH AHJ's AND ASESBN REQUIREMENTS.
14. MAINTAIN FIRE RATING OF CONSTRUCTION WHERE AIR FEELS ARE BUILT INTO CONSTRUCTION. FIRE STOP AND SEAL PENETRATIONS IN FIRE RATED CONSTRUCTION IN ACCORDANCE TO APPLICABLE I.L. ASSEMBLY RATING.
15. CLEARLY MARK LOCATION AND EXTENT OF CUTTING AND PATCHING PRIOR TO COMMENCEMENT OF WORK.
16. CONTRACTOR TO CHOP, TRENCH, OR CORE SLAB AS REQUIRED. FILL AND PATCH SLAB TO ACCOMMODATE ALL UNDERGROUND UTILITIES (SUCH AS SANITARY, STORM, DOMESTIC WATER LINES, ELECTRICAL, CONDUIT, SPRINKLER MAINS, ETC.) CONTRACTOR TO VERIFY IF SLAB IS STRUCTURAL. IF SO, DO NOT COMMENCE ANY CUTTING UNTIL APPROVAL IS OBTAINED FROM ARCHITECT.
17. PIPES, DUCTS, ETC. IN THAT WOULD OTHERWISE BE VISIBLE IN FINISHED SPACES TO BE CONCEALED WITH FURRING OR CEILING U.N.D.
18. CONTRACTOR TO COORDINATE LOCATIONS OF PLUMBING CLEAN-OUT ACCESS PANELS NOTED ON PLUMBING DRAWINGS WITH NEW CONSTRUCTION.
19. REFER TO STRUCTURAL AND MEPP DRAWINGS AND SPECIFICATIONS FOR MORE INFORMATION.
20. WALL TYPES TO BE [WALL TAG] UNLESS OTHERWISE NOTED.

CONSTRUCTION PLAN KEY NOTES

----- EXPANSION JOINT

CONSTRUCTION PLAN LEGEND

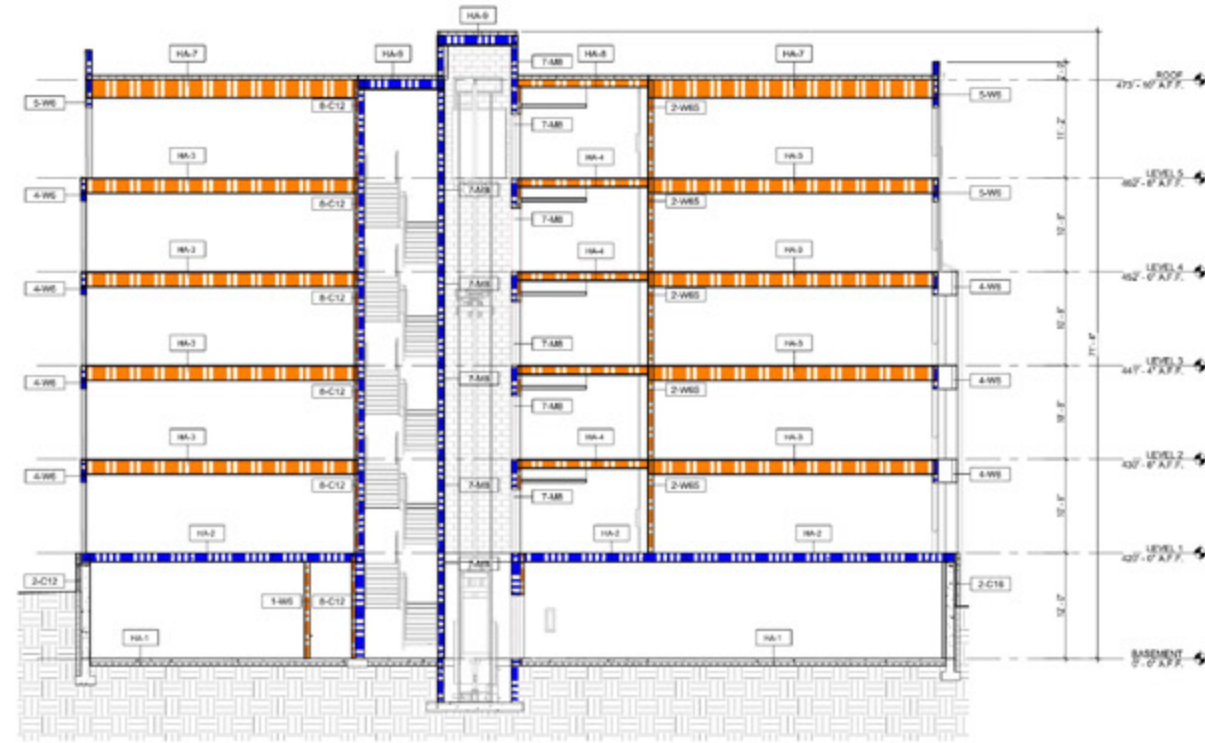
-  CONCRETE SLAB ON GRADE AT MAIN ELEVATION
-  RECESSED BALCONY OR OTHER CONCRETE SLABS ON GRADE
-  BRICK SHELF, REF. STRUCT. DWGS.



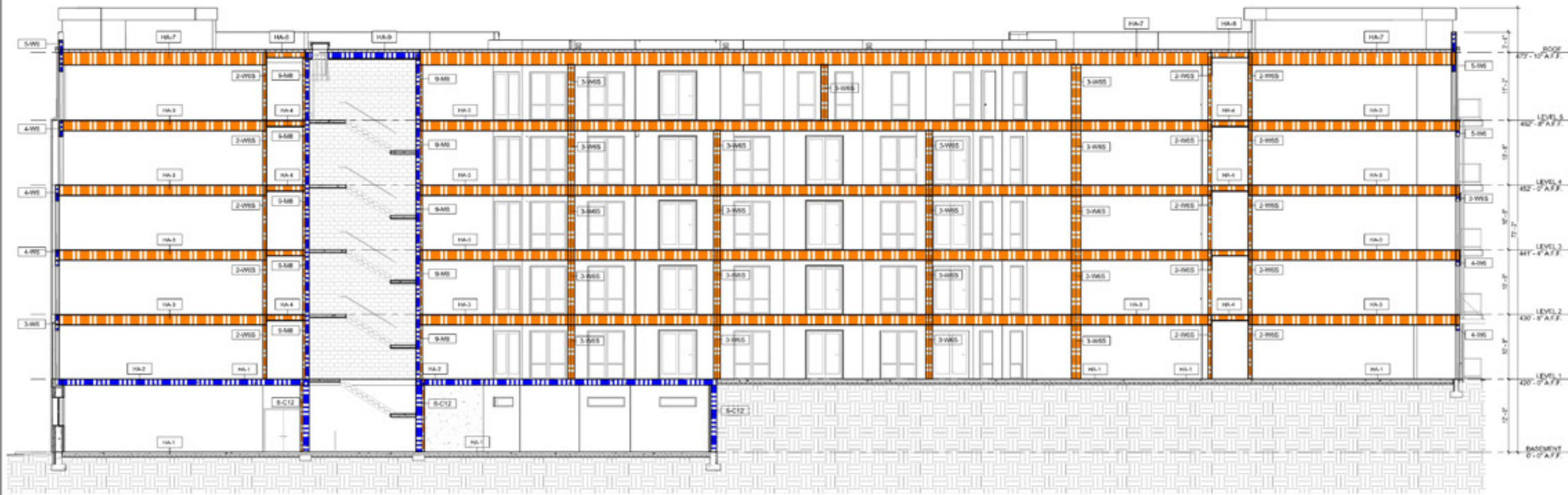
BASEMENT SLAB EDGE PLAN

A050

BUILDING SECTION KEY NOTES

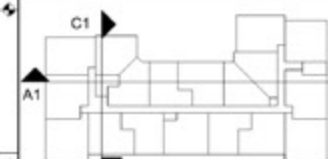


BUILDING SECTION 2 C1
REF DRAWING A11 A10 SCALE: 1/8" = 1'-0"



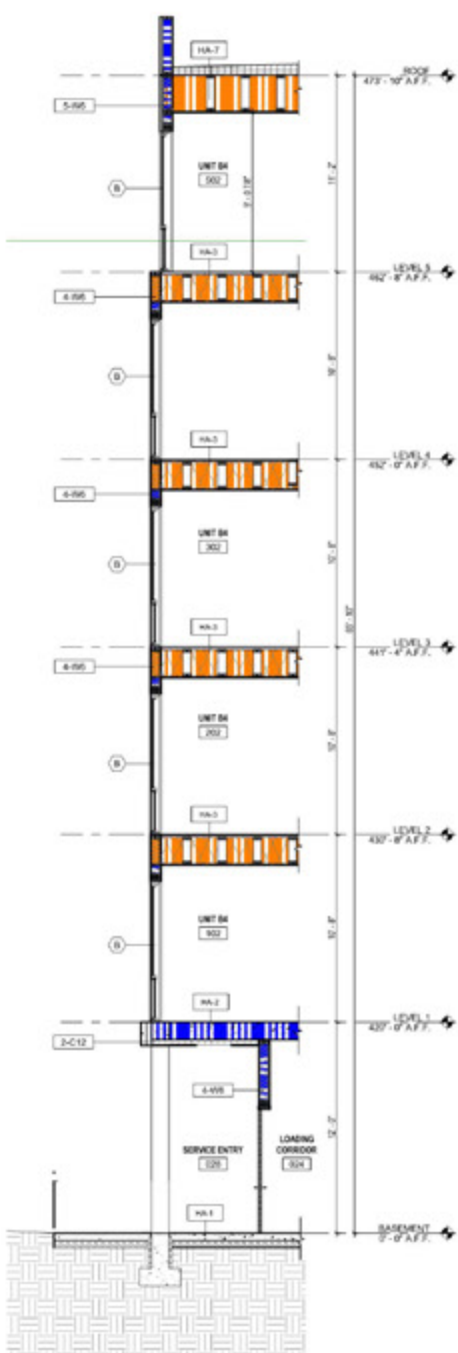
BUILDING SECTION 1 A1
REF DRAWING A11 A10 SCALE: 1/8" = 1'-0"

KEY PLAN

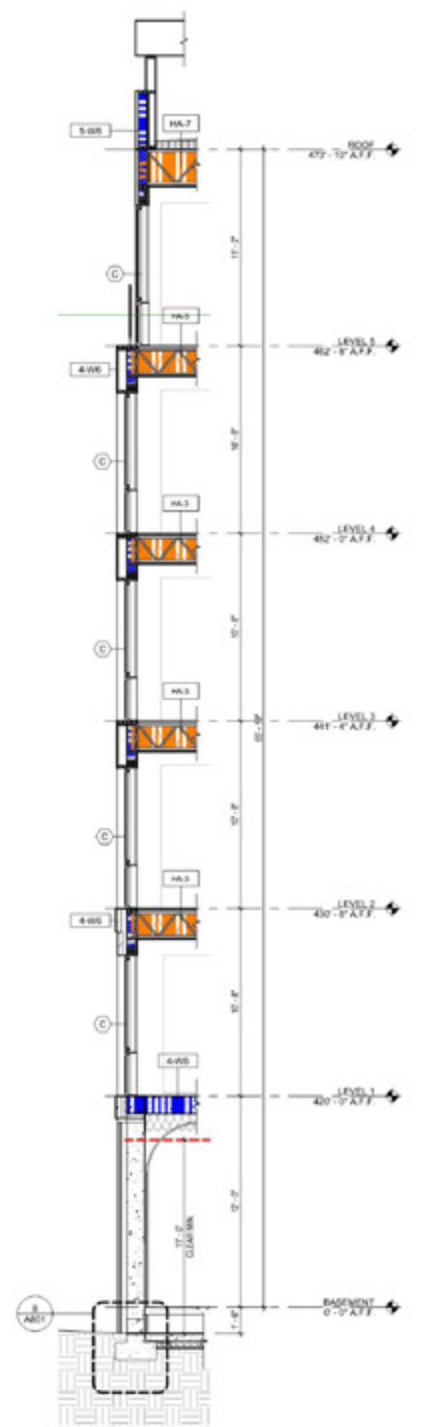


BUILDING SECTIONS

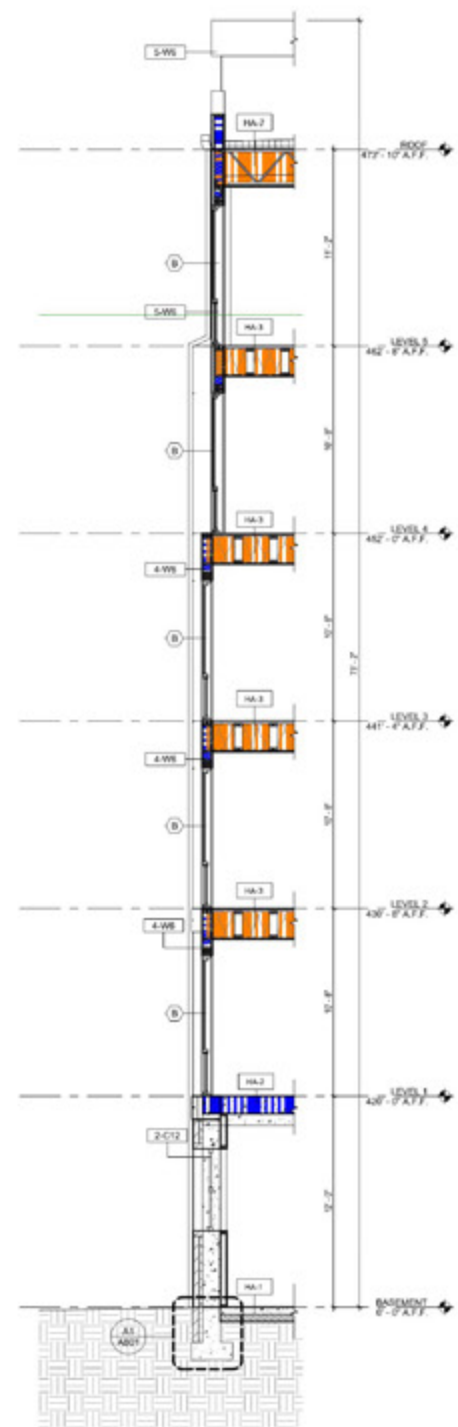
A300



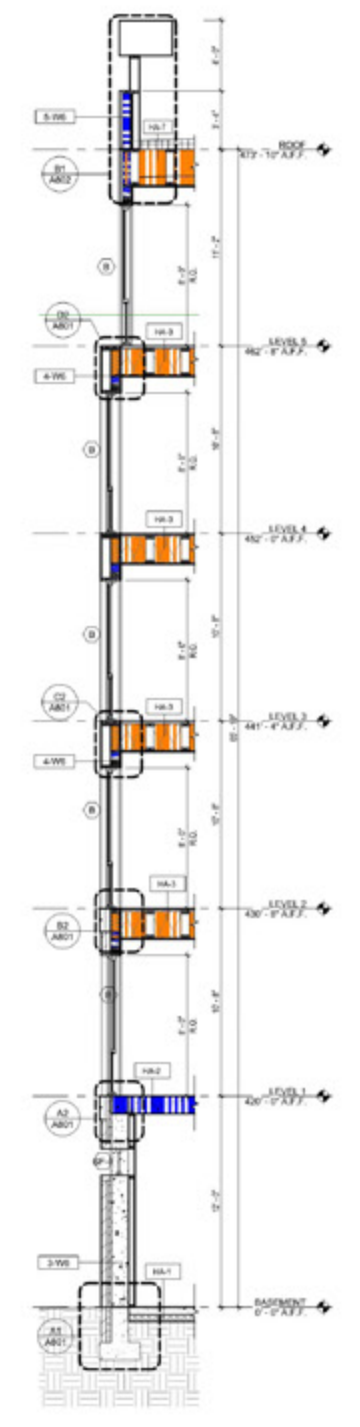
Section 4
 REF DRAWING A1 / A100 SCALE 1/4" = 1'-0"
 A5



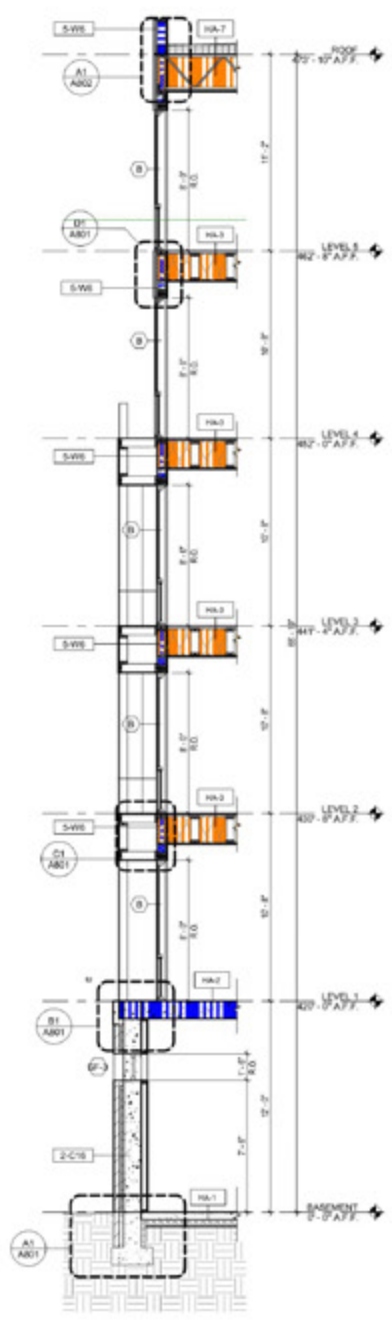
Section 3
 REF DRAWING A1 / A100 SCALE 1/4" = 1'-0"
 A4



Section 6
 REF DRAWING A1 / A100 SCALE 1/4" = 1'-0"
 A3



Section 1
 REF DRAWING A1 / A100 SCALE 1/4" = 1'-0"
 A2



WALL SECTION @ FCP INSET WINDOW
 REF DRAWING A1 / A100 SCALE 1/4" = 1'-0"
 A1

WALL SECTIONS

A310

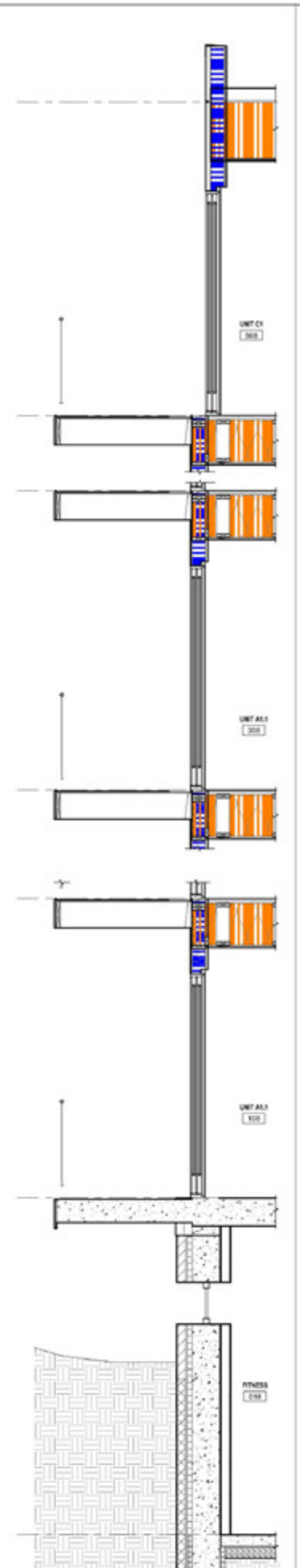
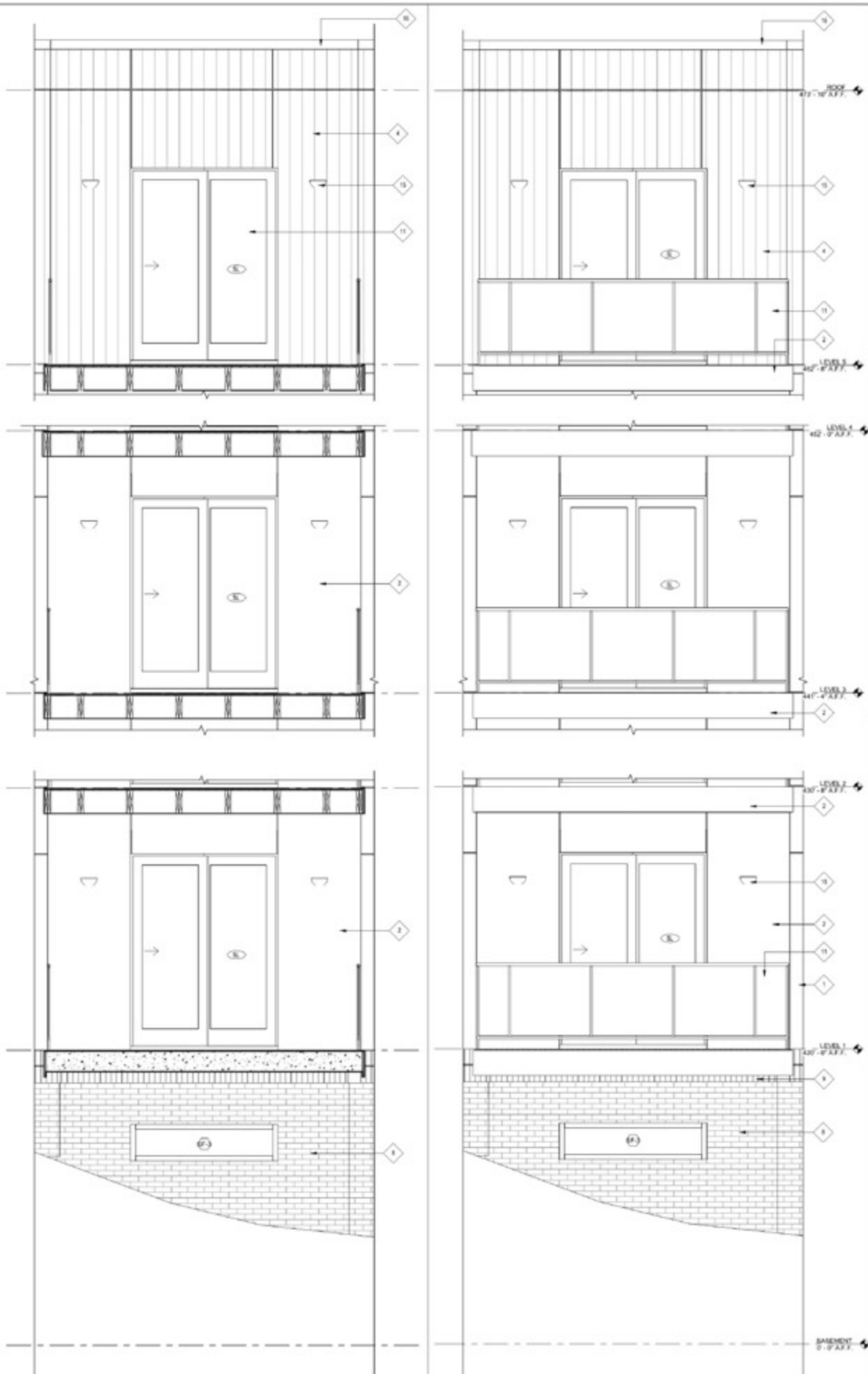
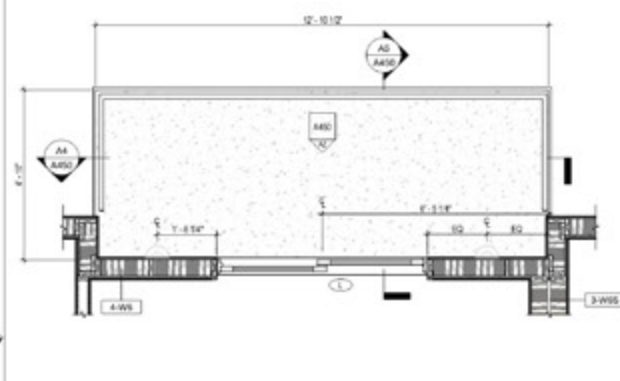
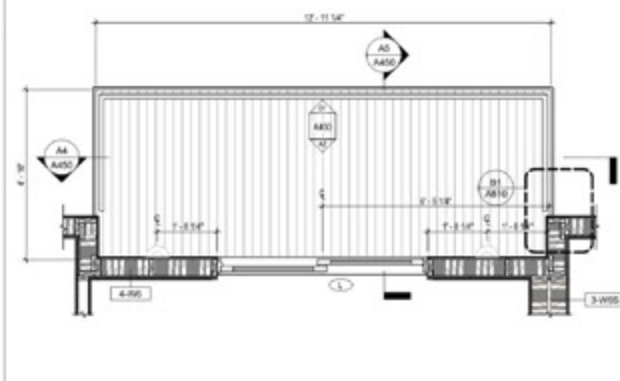
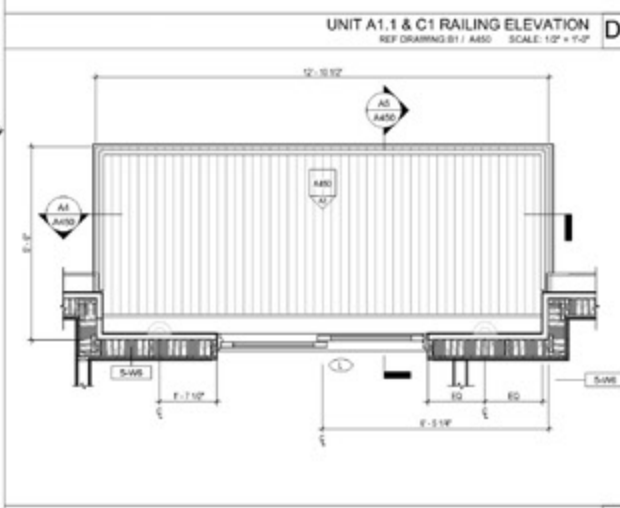
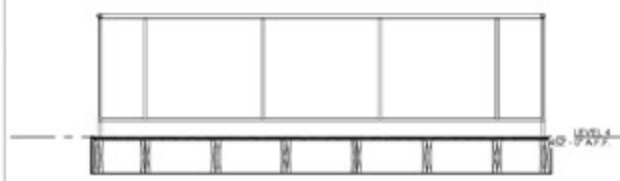
CONSTRUCTION PLAN GENERAL NOTES

- SEE SPECIFICATIONS FOR DETAILED INFORMATION.
- SEE A01-207 FOR GENERAL CONDITIONS OF THE CONTRACT FOR CONSTRUCTION.
- SEE SHEET A01 FOR TYPICAL NOTES, SYMBOLS, ACCESSIBILITY INCLUDING STRAIGHTENERS AND ABREVIATIONS. SEE SHEET 000 FOR CODE SUMMARY INFORMATION.
- SEE SHEET 010 FOR PARTITION TYPES AND SCHEDULES.
- CONTRACTOR TO COORDINATE CONSTRUCTION WITH ALL TRADES PRIOR TO COMMENCEMENT OF WORK.
- CONTRACTOR RESPONSIBLE FOR REPAIRING PATCHING AND REPLACING DAMAGE DUE TO CONSTRUCTION OR TO INSTALLATIONS BY TRADES. REPAIR, PATCH, AND FINISH OF EXISTING CONDITIONS DAMAGED BY NEW WORK TO MATCH ADJACENT WORK.
- INTERIOR DIMENSIONS ARE TAKEN TO THE FACE OF EXISTING WALLS, NEW CONSTRUCTION, AND EQUIPMENT E.G.
- EXTERIOR DIMENSIONS ARE TAKEN FROM FACE OF SHEATHING OR MASSIVE U.L.S. SEE WALL SECTIONS AND DETAILS FOR MORE INFORMATION.
- SET DOORS 4" FROM ADJACENT PARTITIONS U.L.S.
- CONTRACTOR TO FIELD VERIFY DIMENSIONS AND CONNECTION POINTS PRIOR TO COMMENCEMENT OF NEW CONSTRUCTION. IN CASE OF CONFLICT, CONTRACTOR TO NOTIFY THE ARCHITECT PRIOR TO PROCEEDING WITH WORK.
- ALL ITEMS TO BE SUPPLIED AND INSTALLED BY CONTRACTOR UNLESS SPECIFICALLY LISTED AS "U.L.S." OR "BY OTHER".
- COORDINATE SEQUENCE OF WORK TO PROTECT ADJACENT SPACES FROM CONSTRUCTION. DIME PROVIDE BARBER OPERATIONS AS REQUIRED AND SPECIFIED BY GENERAL CONTRACTOR AND OWNER.
- PROVIDE AND INSTALL ADEQUATE SOLID-FIRE RETARDANT WOOD BLOCKING AT ALL EXISTING AND NEW PARTITIONS TO RECEIVE MILLWORK, SHELVING, WALL MOUNTED EQUIPMENT, PLUMBING ACCESSORIES, ETC. BLOCKING TO COMPLY WITH SMF-101 AND ASTM E84 REQUIREMENTS.
- MAINTAIN FIRE RATING OF CONSTRUCTION WHERE ANY ITEMS ARE BUILT INTO CONSTRUCTION. FIRE STOP AND SEAL PENETRATIONS IN FIRE RATED CONSTRUCTION IN ACCORDANCE TO APPLICABLE U.L. ASSEMBLY RATING.
- CLEARLY MARK LOCATION AND EXTENT OF CUTTING AND PATCHING PRIOR TO COMMENCEMENT OF WORK.
- CONTRACTOR TO DROP, TRENCH, OR CORE SLAB AS REQUIRED. FILL AND PATCH SLAB TO ACCOMMODATE ALL UNDERGROUND UTILITIES SUCH AS SANITARY, STORM, CONDENSATE, WATER, LINES, ELECTRICAL CONDUIT, SPRINKLER MAINS, ETC. CONTRACTOR TO VERIFY IF SLAB IS STRUCTURAL. P.S.D. DO NOT COMMENCE ANY CUTTING UNTIL APPROVAL IS OBTAINED FROM ARCHITECT.
- PIPELS, DUCTS, ETC. IN THAT WOULD OTHERWISE BE VISIBLE IN FINISHED SPACES TO BE CONCEALED WITH FURNISH OR CEILING U.L.S.
- CONTRACTOR TO COORDINATE LOCATIONS OF PLUMBING CLEAN-OUT ACCESS PANELS NOTED ON PLUMBING DRAWINGS WITH NEW CONSTRUCTION.
- REFER TO STRUCTURAL AND MEPFP DRAWINGS AND SPECIFICATIONS FOR MORE INFORMATION.
- WALL TYPES TO BE 18K UNLESS OTHERWISE NOTED.

CONSTRUCTION PLAN KEY NOTES

Mark	Description	Manufacturer	Color
1	FIBER CEMENT PANEL	JAMES HARDIE	ARCTIC WHITE
2	FIBER CEMENT PANEL	JAMES HARDIE	KIVARU BROWN
3	METAL PANEL	ATAS	SLACKSTONE
4	METAL PANEL	ATAS	MEDIUM BRONZE
5	FIBER CEMENT PANEL	JAMES HARDIE	IRON GRAY
6	BRICK BROWN	BROWNSTON	COCOA
7	SOLDER COURSE	BROWNSTON	COCOA
8	BRICK BEIGE	BROWNSTON	LIGHT GRAY W/O
9	SOLDER COURSE BEIGE	BROWNSTON	LIGHT GRAY W/O
10	VINYL WINDOWS	ANCOURSE	BLACK
11	ALUMINUM RAILING	JALUS BLUM & CO	18 GLASS RAILING
12	BRICK WHITE	BELDEN	ALASKA WHITE
13	SOLDER COURSE WHITE	BELDEN	ALASKA WHITE
14	ALUMINUM PREFABRICATED CANOPY	MARIS	ARCHITECTURAL CHARCOAL GRAY
15	WALL SCORING @ BALCONY	TECH LIGHTING	PITCH SINGLE BRONZE
16	METAL COPING	PAC-CLAD	PAINTED TO MATCH ADJACENT MATERIAL
17	DIMENSIONAL LETTERS	IMPACT SIGNS	POWDER COATED ALUMINUM

KEY PLAN

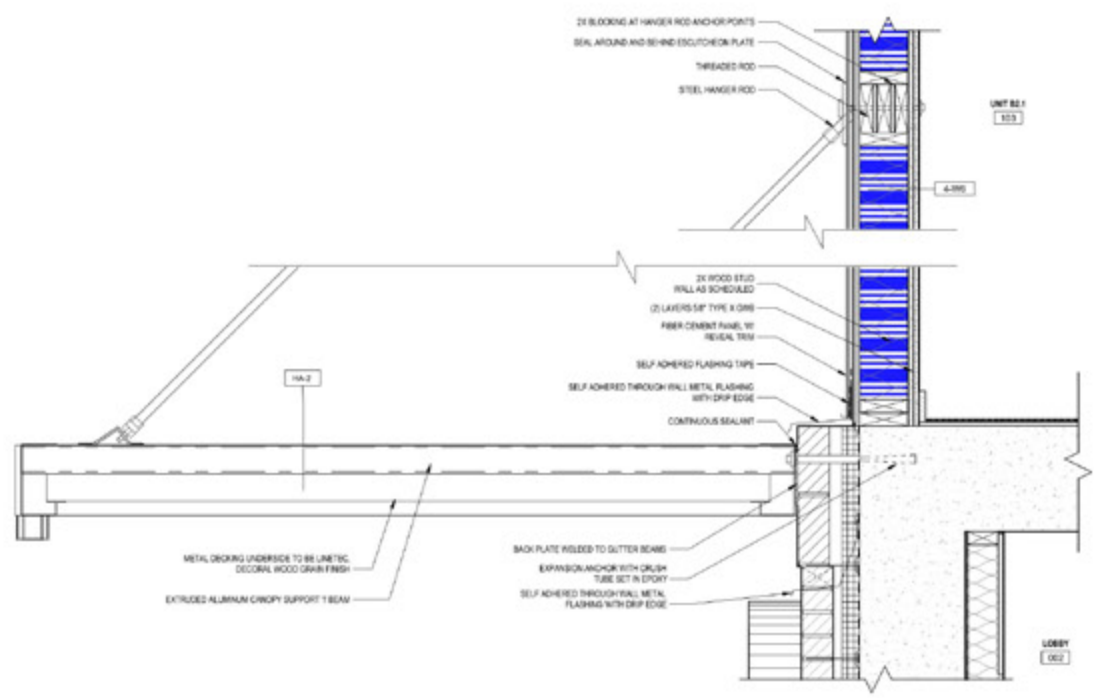


UNIT A1.1 & C1 BALCONY SECTION 2 REF DRAWING A1 / A50. SCALE: 1/2\"/>
A5

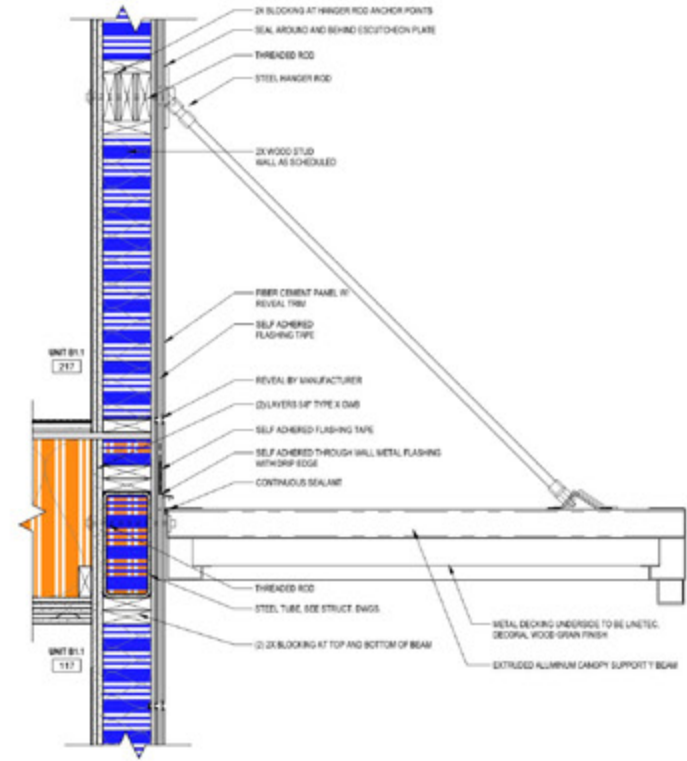
UNIT A1.1 & C1 BALCONY SECTION 1 REF DRAWING A1 / A40. SCALE: 1/2\"/>
A4

UNIT A1.1 & C1 BALCONY ELEVATION REF DRAWING A1 / A81. SCALE: 1/2\"/>
A2

UNIT A1.1 - BALCONY 1st LEVEL REF DRAWING A1 / A30. SCALE: 1/2\"/>
A1



ENLARGED VESTIBULE CANOPY SECTION C3
REF DRAWING A3 / A458 SCALE: 1/2" = 1'-0"

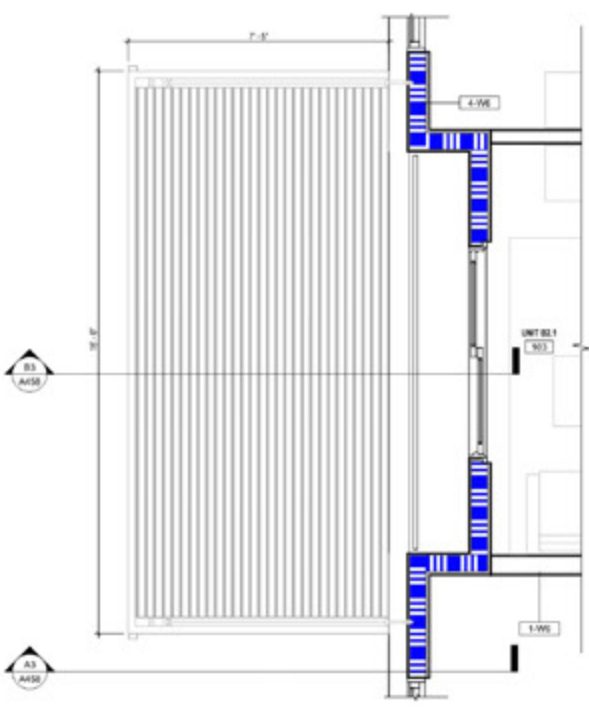


ENLARGED STAIR 2 ENTRY CANOPY SECTION C1
REF DRAWING B1 / A458 SCALE: 1/2" = 1'-0"

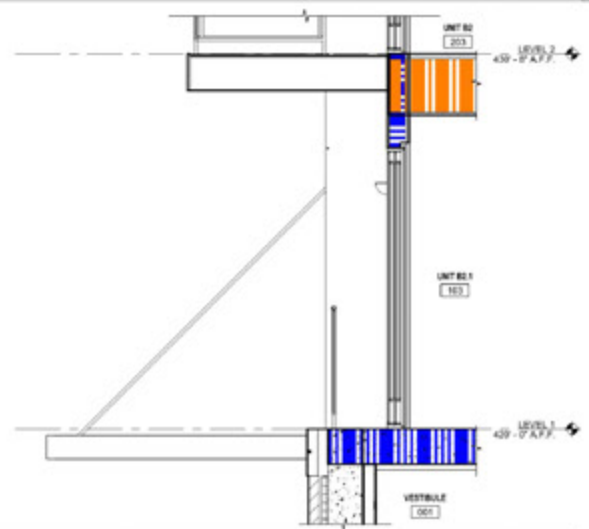
- CONSTRUCTION PLAN GENERAL NOTES**
- SEE SPECIFICATIONS FOR DETAILED INFORMATION.
 - SEE A301-2017 FOR GENERAL CONDITIONS OF THE CONTRACT FOR CONSTRUCTION.
 - SEE SHEET A001 FOR TYPICAL NOTES, SYMBOLS, ACCESSIBILITY INCLUDING THROAUGHS AND ABBREVIATIONS. SEE SHEET 0000 FOR CODE SUMMARY INFORMATION.
 - SEE SHEET 0010 FOR PARTITION TYPES AND SCHEDULES.
 - CONTRACTOR TO COORDINATE CONSTRUCTION WITH ALL TRADES PRIOR TO COMMENCEMENT OF WORK.
 - CONTRACTOR RESPONSIBLE FOR REPAIRING, PATCHING, AND REPLACING DAMAGE DUE TO CONSTRUCTION OR TO INSTALLATIONS BY TRADES. REPAIR, PATCH, AND FINISH OF EXISTING CONDITIONS DAMAGED BY NEW WORK TO MATCH ADJACENT WORK.
 - INTERIOR DIMENSIONS ARE TAKEN TO THE FACE OF EXISTING WALLS, NEW CONSTRUCTION, AND EQUIPMENT U.N.D.
 - EXTERIOR DIMENSIONS ARE TAKEN FROM FACE OF SHEATHING OR MASSIVE LIND. SEE WALL SECTIONS AND DETAILS FOR MORE INFORMATION.
 - SET DOORS 2" FROM ADJACENT PARTITIONS U.N.D.
 - CONTRACTOR TO FIELD VERIFY DIMENSIONS AND CONNECTION POINTS PRIOR TO COMMENCEMENT OF NEW CONSTRUCTION. IN CASE OF CONFLICT, CONTRACTOR TO NOTIFY THE ARCHITECT PRIOR TO PROCEEDING WITH WORK.
 - ALL ITEMS TO BE SUPPLIED AND INSTALLED BY CONTRACTOR UNLESS SPECIFICALLY LISTED AS "U.L.C." OR "BY OTHER".
 - COORDINATE SEQUENCE OF WORK TO PROTECT ADJACENT SPACES FROM CONSTRUCTION. DIME PROVIDE BARBER OPERATIONS AS REQUIRED AND DIRECTED BY GENERAL CONTRACTOR AND OWNER.
 - PROVIDE AND INSTALL ADEQUATE SOLID-FIRE RETARDANT WOOD BLOCKING AT ALL EXISTING AND NEW PARTITIONS TO RECEIVE MILLWORK, SHELVING, WALL MOUNTED EQUIPMENT, PLUMBING ACCESSORIES, ETC. BLOCKING TO COMPLY WITH 604.10 AND 604.10.4 REQUIREMENTS.
 - MAINTAIN FIRE RATING OF CONSTRUCTION WHERE ANY ITEMS ARE BUILT INTO CONSTRUCTION. FIRE STOP AND SEAL FIRE PARTITIONS IN FIRE RATED CONSTRUCTION IN ACCORDANCE TO APPLICABLE U.L. ASSEMBLY RATING.
 - CLEARLY MARK LOCATION AND EXTENT OF CUTTING AND PATCHING PRIOR TO COMMENCEMENT OF WORK.
 - CONTRACTOR TO CHOP, TRIM, OR CORE SLAB AS REQUIRED. FILL AND PATCH SLAB TO ACCOMMODATE ALL UNDERGROUND UTILITIES SUCH AS SANITARY, STORM, DOMESTIC WATER LINES, ELECTRICAL CONDUIT, SPRINKLER MAINS, ETC. CONTRACTOR TO VERIFY IF SLAB IS STRUCTURAL. P.S.D. DO NOT COMMENCE ANY CUTTING UNTIL APPROVAL IS OBTAINED FROM ARCHITECT.
 - PIPES, DUCTS, ETC. IN THAT WOULD OTHERWISE BE VISIBLE IN FINISHED SPACES TO BE CONCEALED WITH FURNISH OR COULCES U.N.D.
 - CONTRACTOR TO COORDINATE LOCATIONS OF PLUMBING CLEAN-OUT ACCESS PANELS NOTED ON PLUMBING DRAWINGS WITH NEW CONSTRUCTION.
 - REFER TO STRUCTURAL AND MEPFP DRAWINGS AND SPECIFICATIONS FOR MORE INFORMATION.
 - WALL TYPES TO BE 1/2" UNLESS OTHERWISE NOTED.

CONSTRUCTION PLAN KEY NOTES

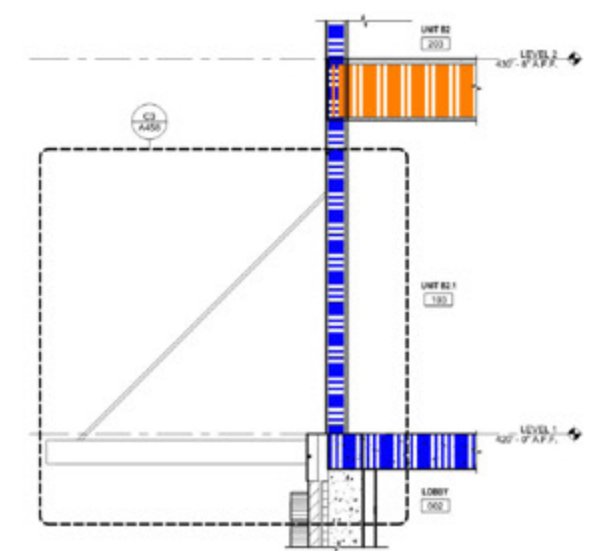
BASIS OF DESIGN:
MATES ARCHITECTURAL CANOPES, MATES SUPER LUMIDECK, BLACK 2-COAT KYNAR FINISH, FAUX WOOD SOFFIT & INTEGRATED LIGHTING.



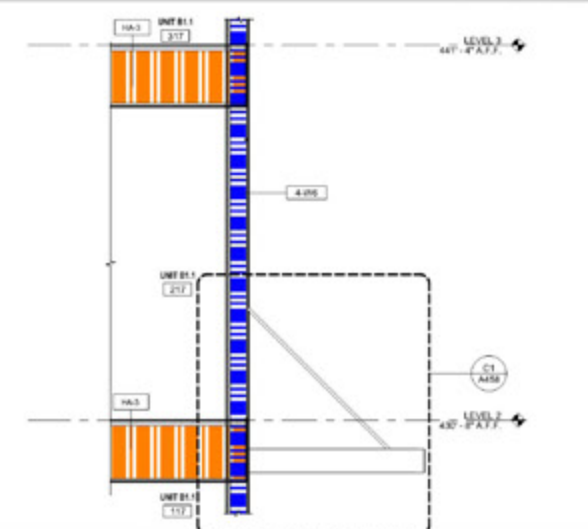
ENLARGED CANOPY PLAN - VESTIBULE A4
SCALE: 1/2" = 1'-0"



VESTIBULE CANOPY SECTION @ WINDOW B3
REF DRAWING A4 / A458 SCALE: 1/2" = 1'-0"

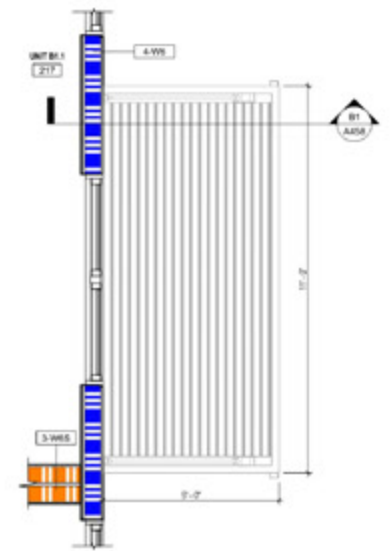


VESTIBULE CANOPY SECTION A3
REF DRAWING A4 / A458 SCALE: 1/2" = 1'-0"

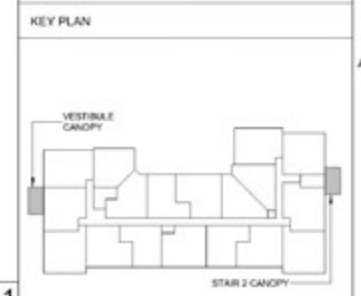


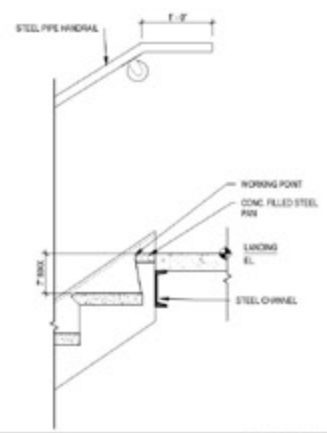
STAIR 2 ENTRY CANOPY SECTION B1
REF DRAWING B1 / A458 SCALE: 1/2" = 1'-0"

BASIS OF DESIGN:
MATES ARCHITECTURAL CANOPES, MATES SUPER LUMIDECK, BLACK 2-COAT KYNAR FINISH, FAUX WOOD SOFFIT & INTEGRATED LIGHTING.

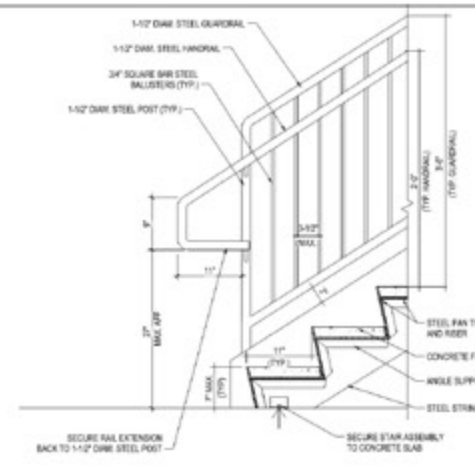


ENLARGED CANOPY PLAN - STAIR 2 A1
REF DRAWING B1 / A458 SCALE: 1/2" = 1'-0"

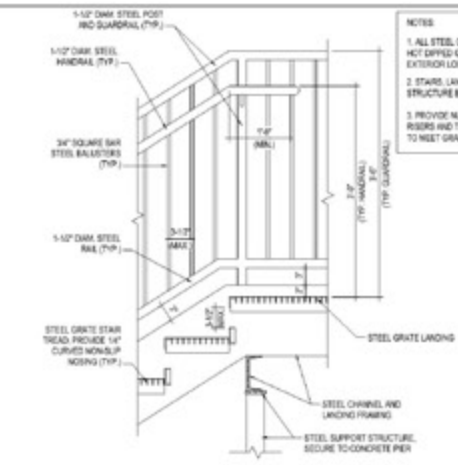




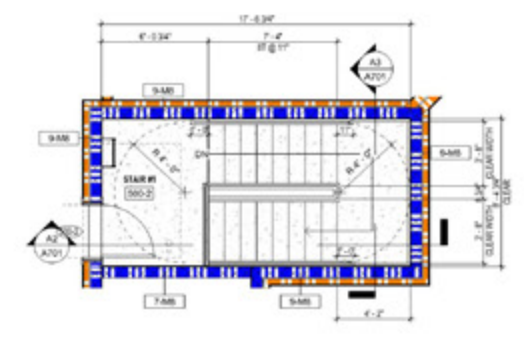
STAIRS HANDRAIL @ TOP
 SCALE: 1" = 1'-0"



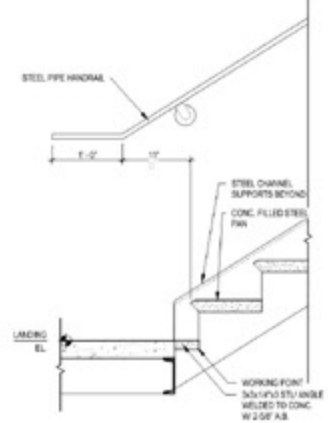
STAIR DETAIL A4
 SCALE: 1" = 1'-0"



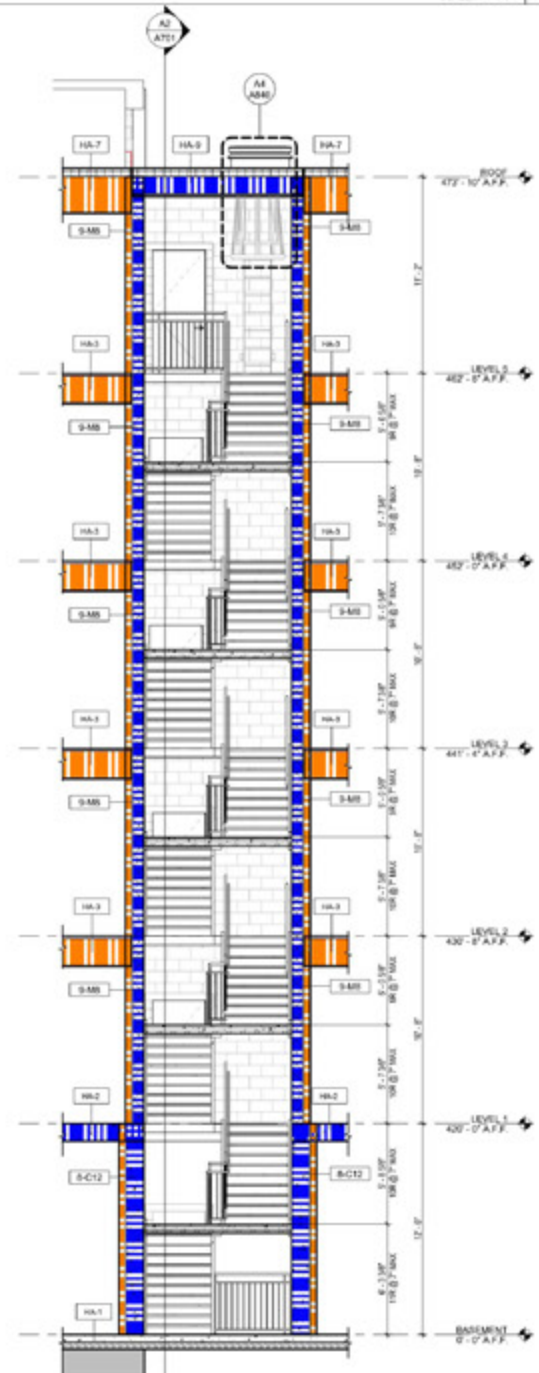
STAIR DETAIL A1
 SCALE: 1" = 1'-0"



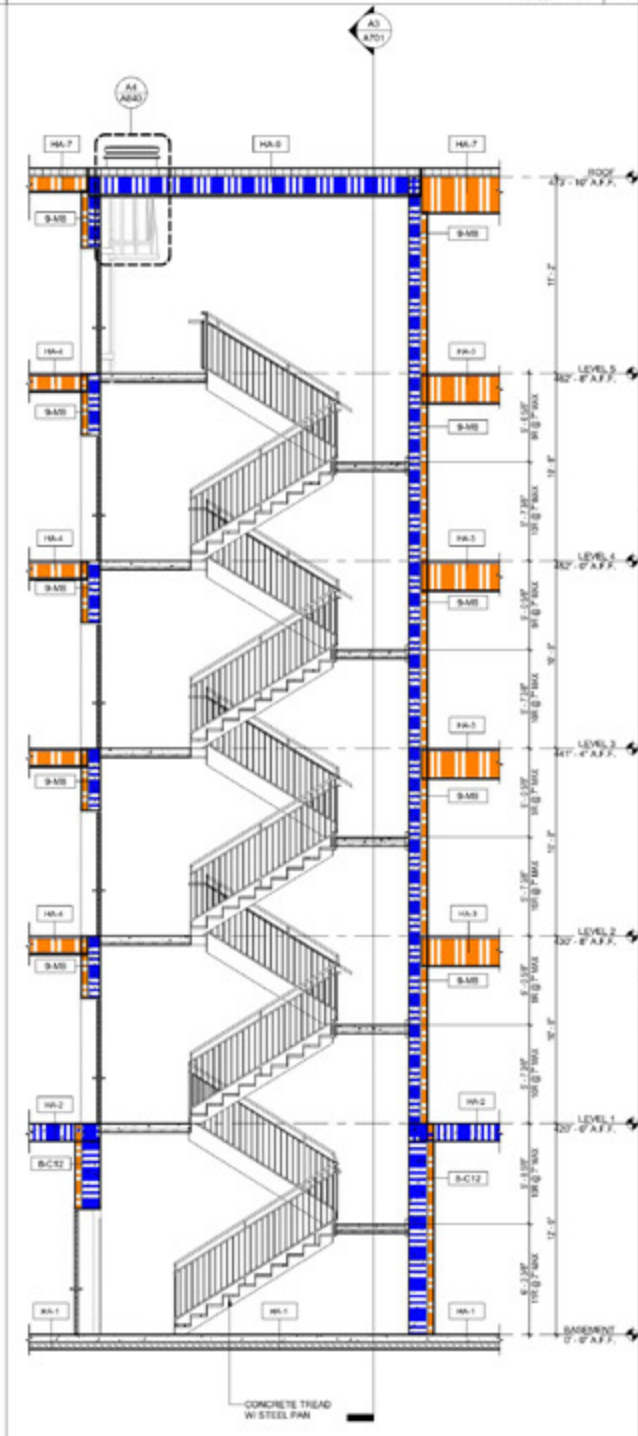
STAIR #1 - LEVEL 5 PLAN
 REF DRAWING A1 / A104 SCALE: 1/4" = 1'-0"



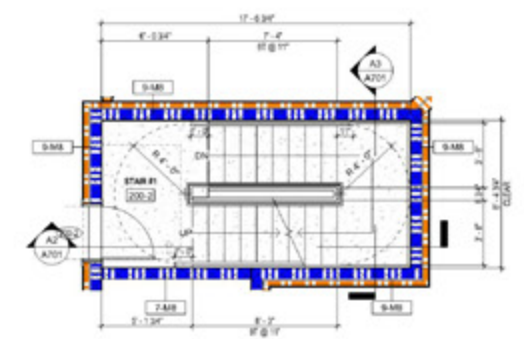
STAIRS HANDRAIL @ BOTTOM
 SCALE: 1" = 1'-0"



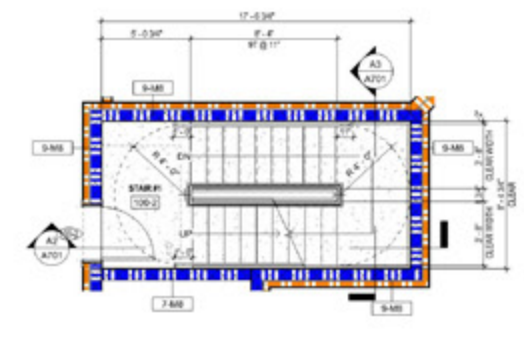
STAIR #1 - SECTION 2
 REF DRAWING A1 / A701 SCALE: 1/4" = 1'-0"



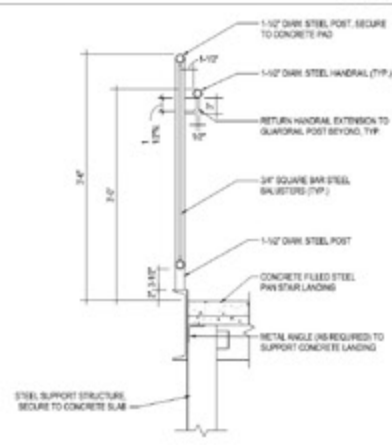
STAIR #1 - SECTION 1
 REF DRAWING A1 / A701 SCALE: 1/4" = 1'-0"



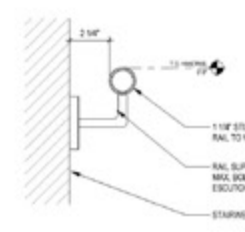
STAIR #1 - LEVEL 2-4 PLAN
 REF DRAWING A1 / A102 SCALE: 1/4" = 1'-0"



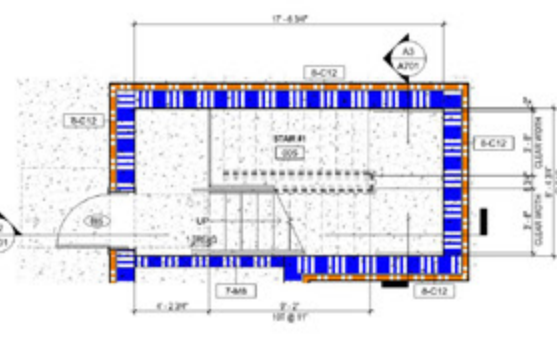
STAIR #1 - LEVEL 1 PLAN
 REF DRAWING A1 / A101 SCALE: 1/4" = 1'-0"



STAIR DETAIL A3
 SCALE: 1" = 1'-0"

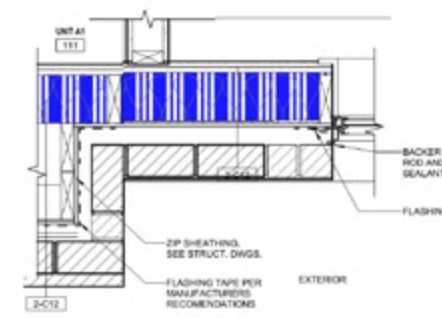


STAIR DETAIL - TYPICAL HANDRAIL
 SCALE: 1" = 1'-0"

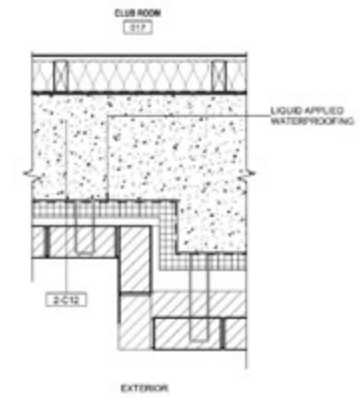


STAIR #1 - BASEMENT LEVEL PLAN
 REF DRAWING A1 / A100 SCALE: 1/4" = 1'-0"

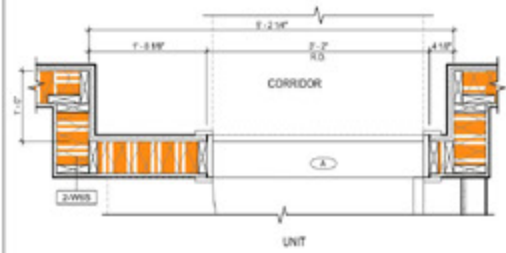
STAIR #1 PLANS,
 SECTIONS, AND
 DETAILS



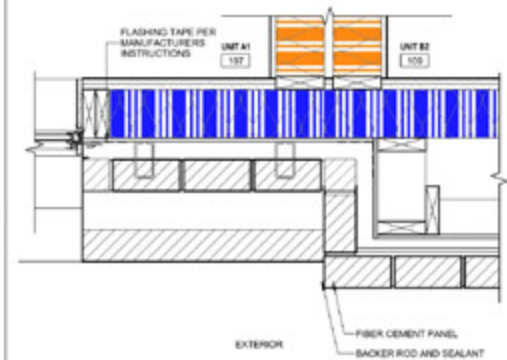
MATERIAL TRANSITION AT LEVEL 1
 REF DRAWING A11 A101 SCALE: 1 1/2" = 1'-0"



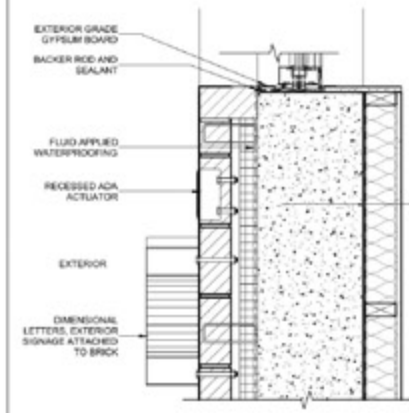
BRICK BUMP AT BASEMENT LEVEL
 REF DRAWING A11 A100 SCALE: 1 1/2" = 1'-0"



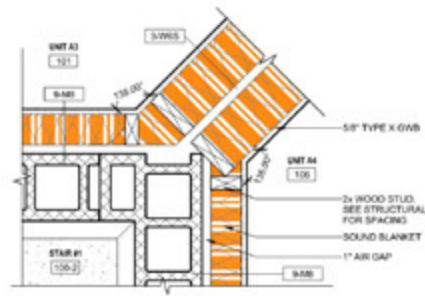
TYPICAL UNIT ENTRY
 REF DRAWING A11 A110 SCALE: 1" = 1'-0"



MATERIAL TRANSITION AT LEVEL 1
 REF DRAWING A11 A101 SCALE: 1 1/2" = 1'-0"



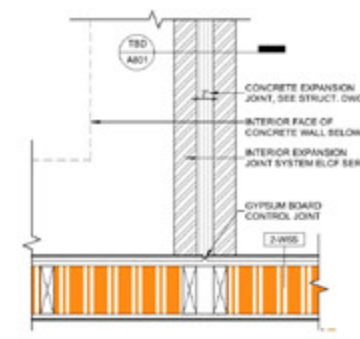
MAIN ENTRY SIGNAGE AND ADA ACTUATOR
 REF DRAWING A11 A100 SCALE: 1 1/2" = 1'-0"



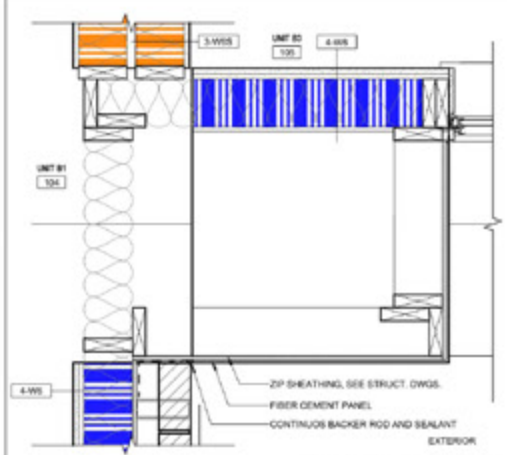
UNIT DEMISING AT 45 DEGREES
 REF DRAWING A11 A101 SCALE: 1 1/2" = 1'-0"



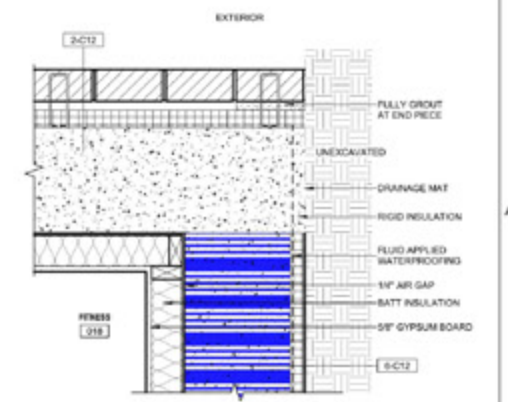
SERVICE ENTRY OPENING
 REF DRAWING A11 A100 SCALE: 1 1/2" = 1'-0"



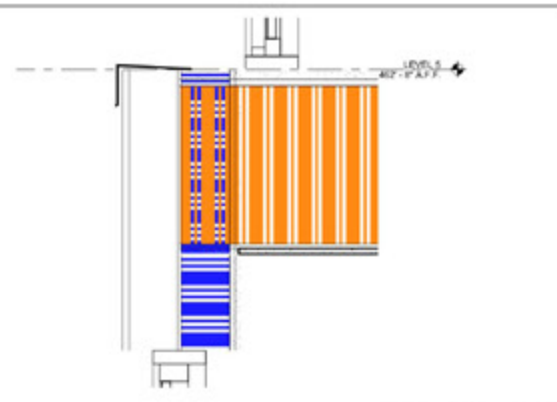
CONCRETE EXPANSION JOINT AT LEVEL 1
 REF DRAWING A11 A101 SCALE: 1 1/2" = 1'-0"



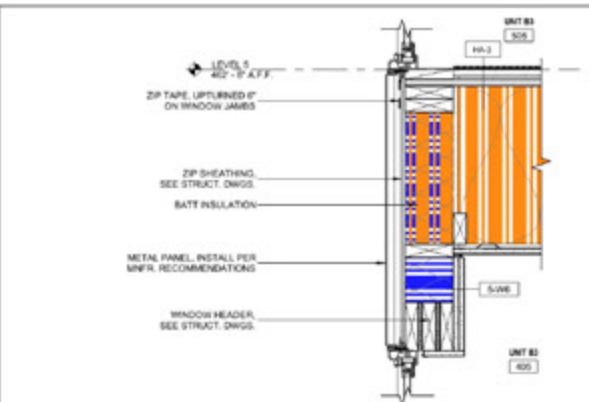
BRICK BUMP AT LEVEL 1
 REF DRAWING A11 A101 SCALE: 1 1/2" = 1'-0"



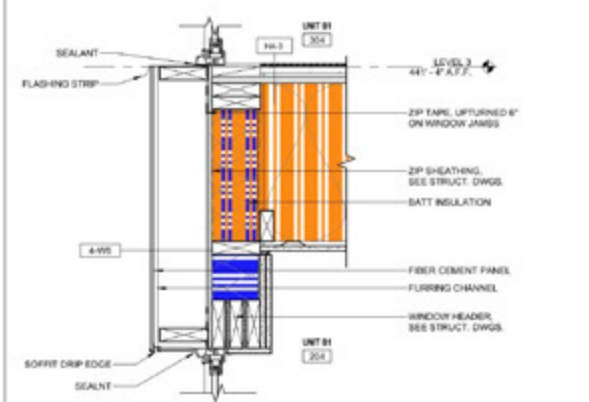
PLAN DETAIL AT UNEXCAVATED CORNER
 REF DRAWING A11 A100 SCALE: 1 1/2" = 1'-0"



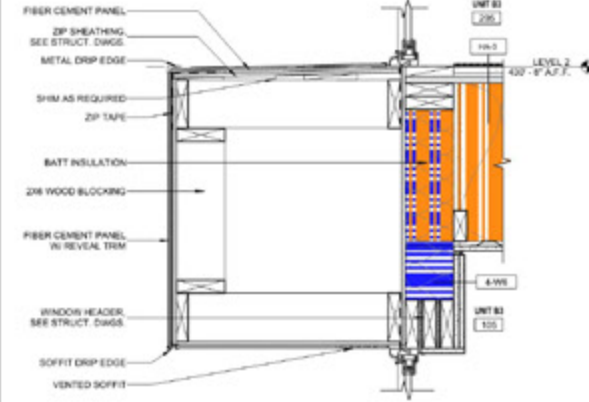
Section 1 - Callout 4
 REF DRAWING A2 / A310 SCALE: 1 1/2" = 1'-0"



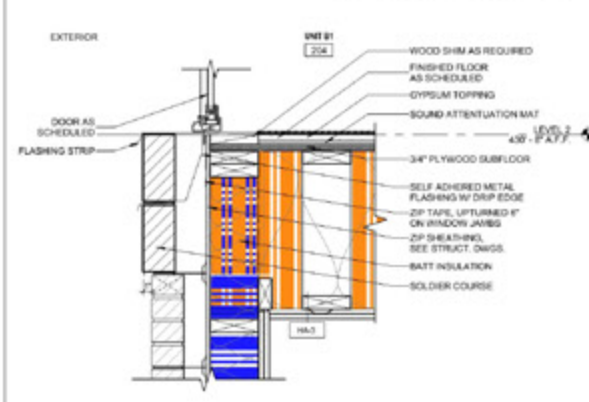
METAL PANEL SECTION
 REF DRAWING A1 / A310 SCALE: 1 1/2" = 1'-0"



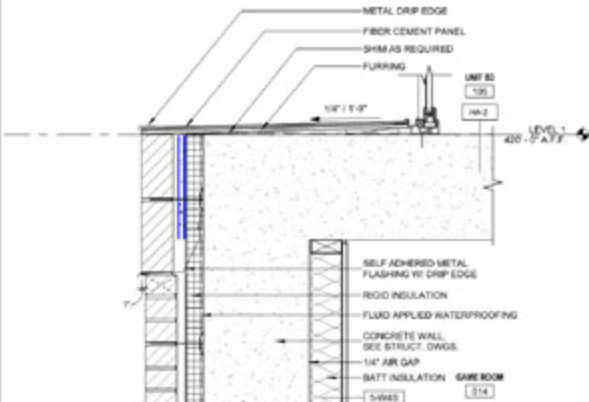
FIBER CEMENT PANEL SECTION
 REF DRAWING A2 / A310 SCALE: 1 1/2" = 1'-0"



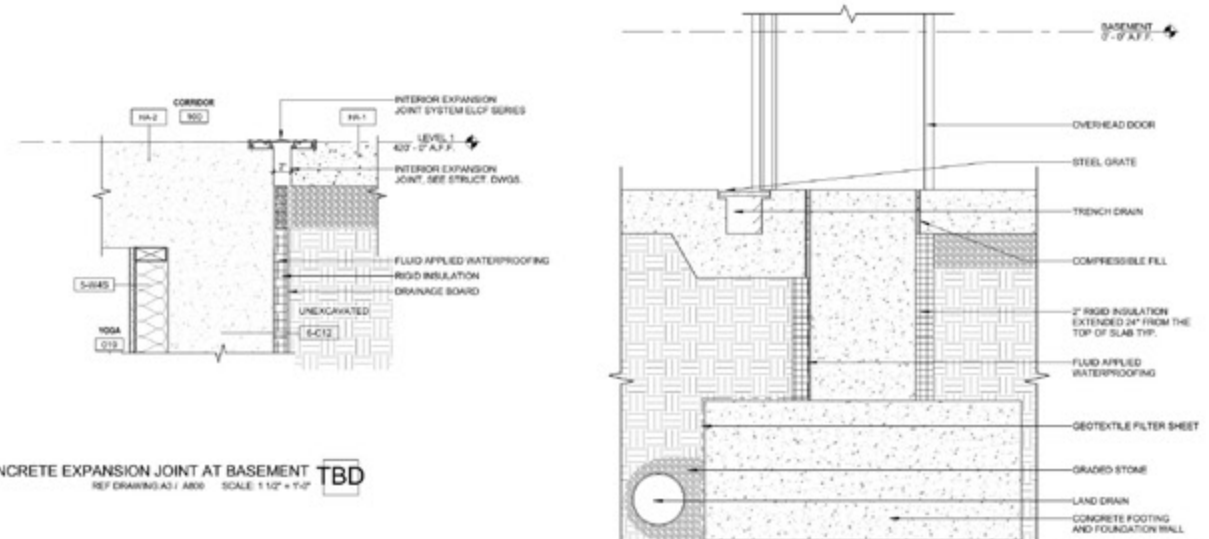
OVERBUILD INSET WINDOW
 REF DRAWING A1 / A310 SCALE: 1 1/2" = 1'-0"



Section 1 - Callout 2
 REF DRAWING A2 / A310 SCALE: 1 1/2" = 1'-0"

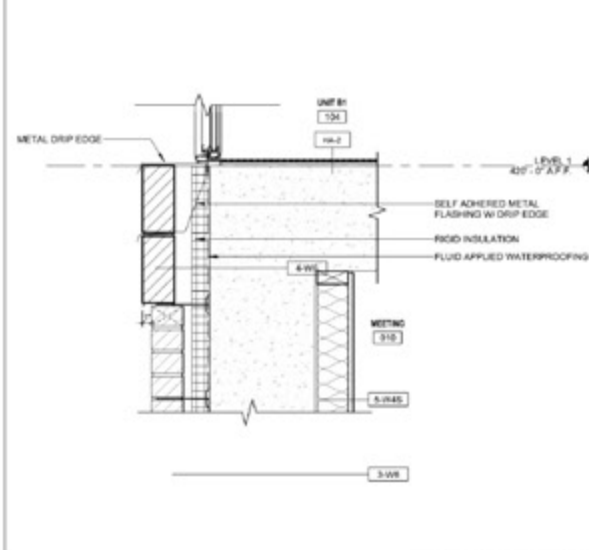


INSET WINDOW
 REF DRAWING A1 / A310 SCALE: 1 1/2" = 1'-0"

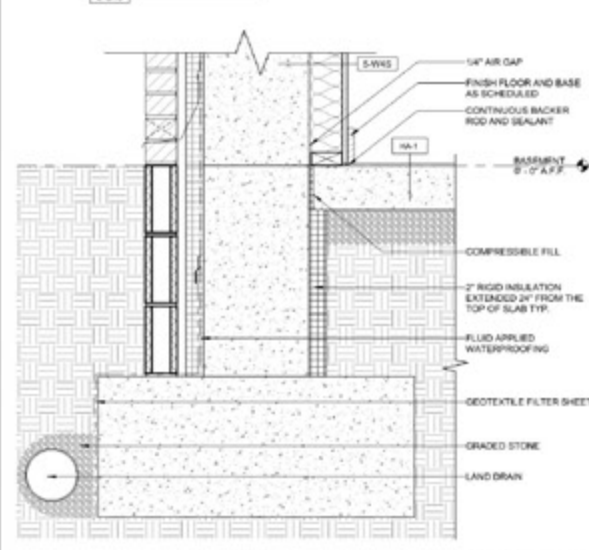


CONCRETE EXPANSION JOINT AT BASEMENT
 REF DRAWING A2 / A310 SCALE: 1 1/2" = 1'-0" **TBD**

FOUNDATION DETAIL AT OH DOOR
 REF DRAWING A2 / A310 SCALE: 1 1/2" = 1'-0" **8**



Section 1 - Callout 1
 REF DRAWING A2 / A310 SCALE: 1 1/2" = 1'-0" **A2**



TYPICAL FOUNDATION AT BRICK WITH CONCRETE
 REF DRAWING A1 / A310 SCALE: 1 1/2" = 1'-0" **A1**



DHVANI SHAH

Architectural Designer
Technical Drawings

dshah.arch@gmail.com
+1 (979) 334 - 5449